

Reference 710-088 for Original Yoke Block Diagram  
(most of this diagram was derived from it)

REVISION BLOCK			
REV	DESCRIPTION	DATE	INCORP. BY
-	Original "Release".	7/21/08	EAW

**NOTE:**  
Cover Drive (Mirror Cover 2) is active low (pulled to GND) to actuate mirror covers.  
Cover Open is +24V (open) and GND (closed).  
Cover Closed is **NOT** known. **Need to verify.**

(Reference Original Drawing 710-445)

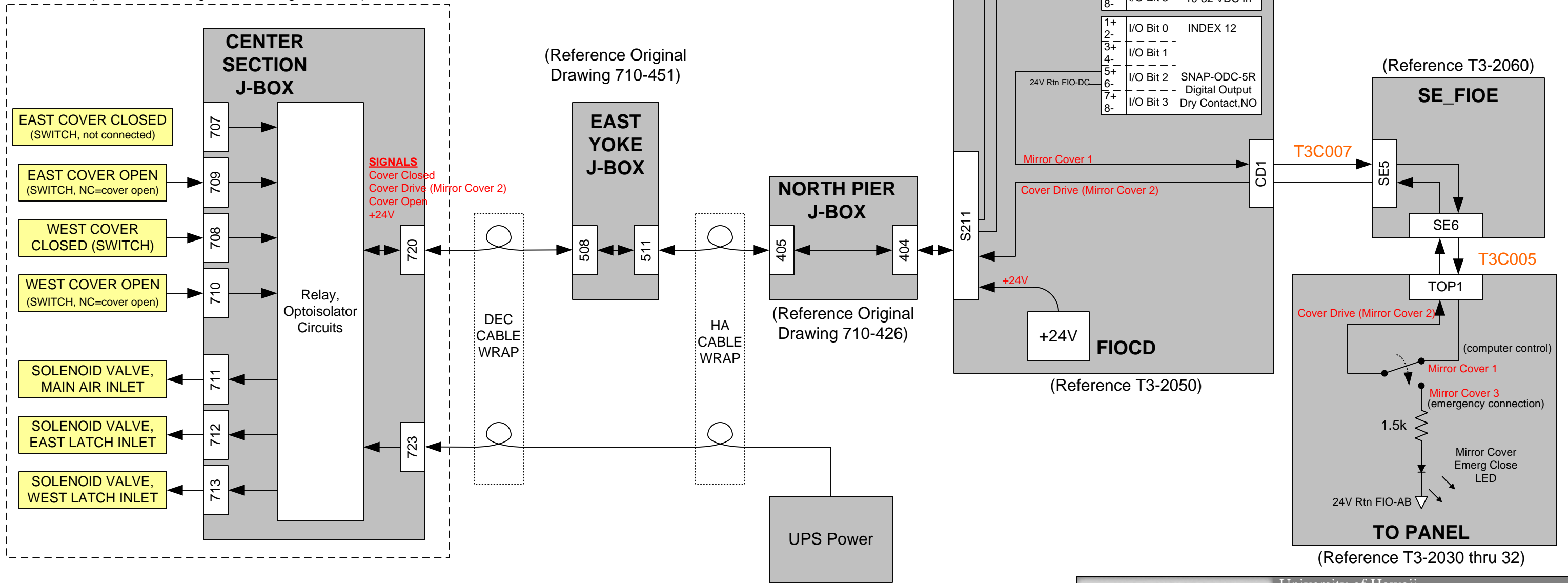
(Reference Original Drawing 710-451)

(Reference Original Drawing 710-426)

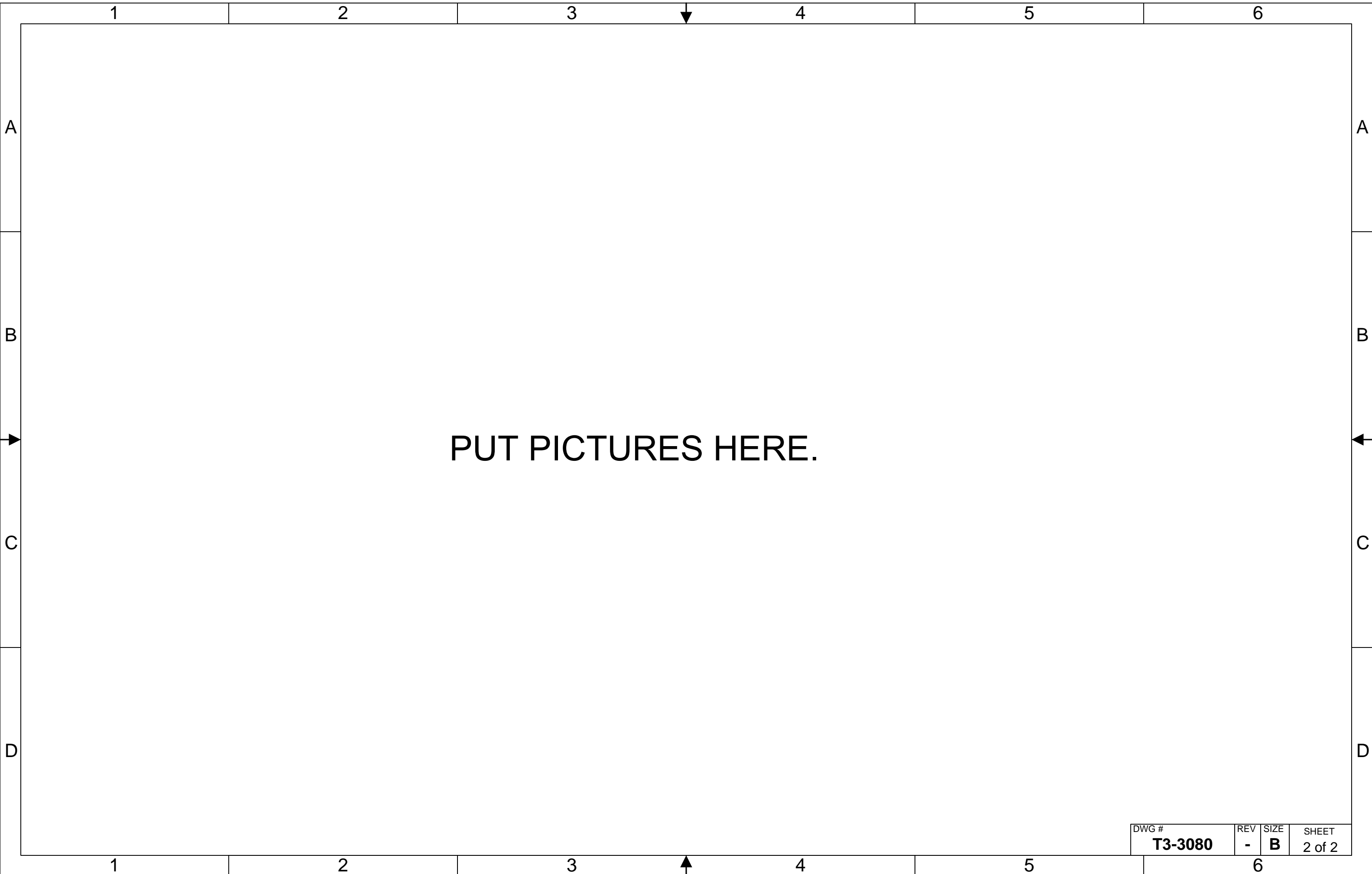
(Reference T3-2050)

(Reference T3-2060)

(Reference T3-2030 thru 32)



DWG #	REV	TITLE	
<b>T3-3080</b>	-	<b>Mirror Covers</b>	
ENGINEER E. Warmbier	LAST EDIT 8/13/2008 11:28:59 AM	SIZE <b>B</b>	SHEET 1 of 2
FILE: Y:\public_html\tcs3\Design\T3-3090_Mirror_Covers.vsd			



PUT PICTURES HERE.

DWG #	REV	SIZE	SHEET
<b>T3-3080</b>	-	<b>B</b>	2 of 2