
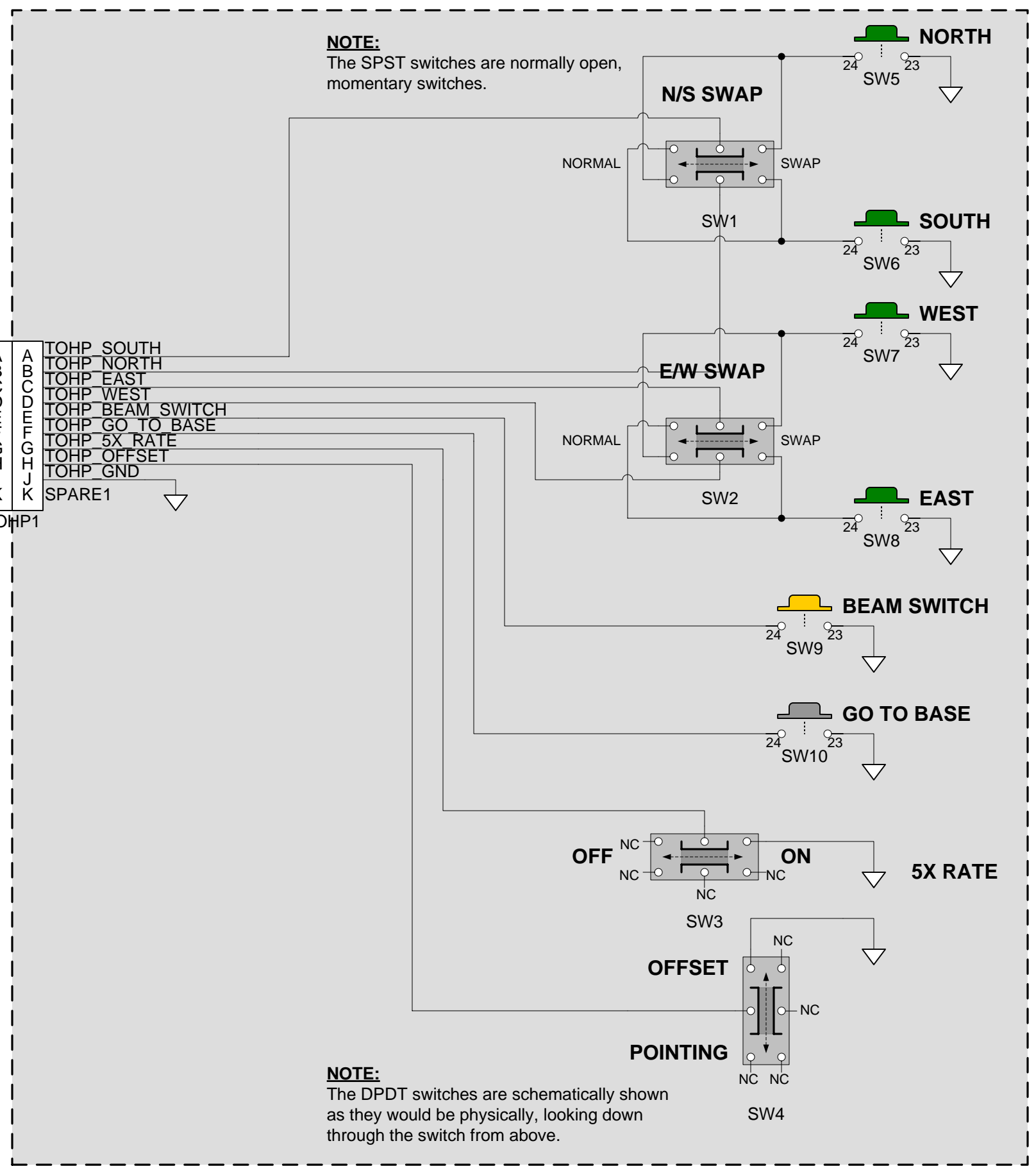
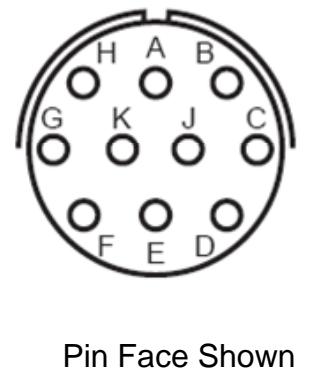
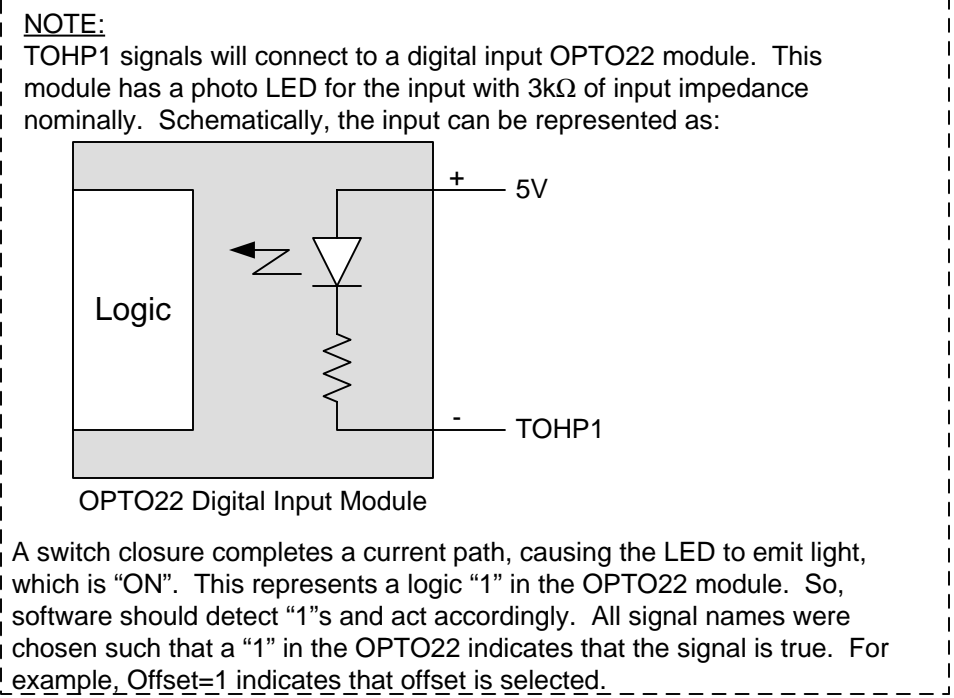
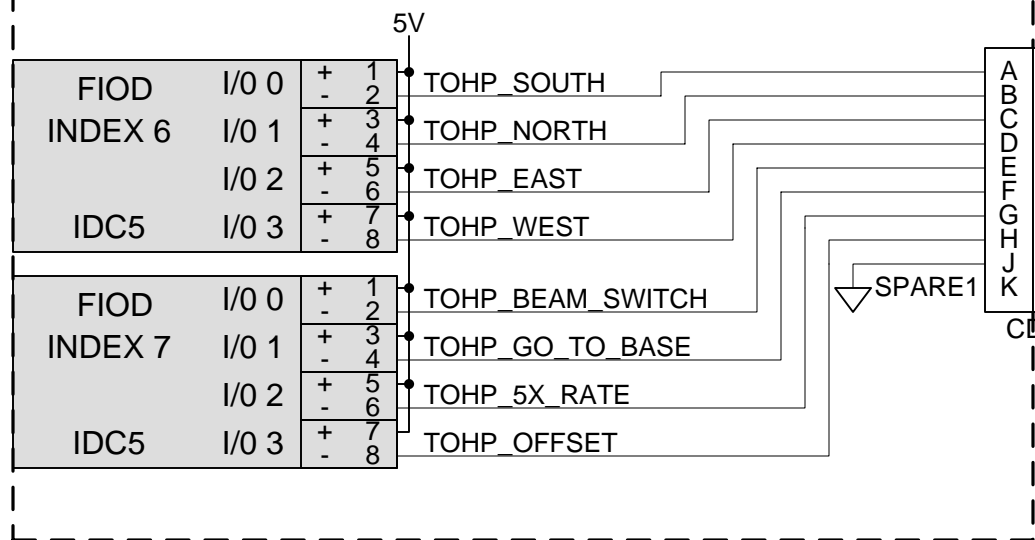


(final photos go here)

REVISION BLOCK			
REV	DESCRIPTION	DATE	INCORP. BY
-	"Initial Release"	6/08	EAW

		University of Hawaii Institute for Astronomy	
DWG #	REV	TITLE	
<b>T3-2043</b>	-	<b>Telescope Operator (TO) Hand Paddle &amp; Cable</b>	
ENGINEER	LAST EDIT	SIZE	SHEET
E. Warmbier	6/27/2008 10:56:42 AM	<b>B</b>	1 of 5
FILE: Y:\public_html\tcs3\Design\T3-2043-TO_Hand_Paddle_&_Cable.vsd			

### FIOCD Rack



**TO HAND PADDLE PARTS LIST**

FIND #	QTY	Part #	Description	Ref Des	Comment
1	1	04101606	Enclosure	-	Made by Gehäuse Systeme
2	4	807503-200	Switch, momentary, green	SW5-8	
3	1	807505-700	Switch, momentary, gold	SW9	
4	1	807605-000	Switch, momentary, Stainless	SW10	
5	4	S802C21S207Q	Switch, DPDT, Slide	SW1-4	
6	1	MS3112E12-10P	Connector, Mil-spec, 10pin, round	TOHP1	
7	AR	-	Wire, general, 24 AWG	-	

**Metal Switches — TH8 Series**

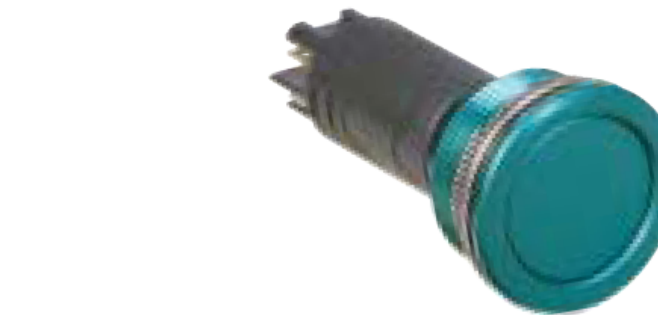
The TH8 metal switch in stainless steel or anodized aluminum (various colors) mounts in a 22.5 mm round panel cutout.

- ▶ Anodized Aluminum or Stainless Steel Housing
- ▶ Various Housing Colors Available
- ▶ Mounts in 22.5 mm Round Panel Cut-Out

- ▶ 230 VAC, 6 A
- ▶ Gold-Plated Contacts

Stock No.*	Mfr.'s Type	Description	EACH	
			1-14	15-24
804-514X	807503 X00	1 NO + 1 NC, mom., flush mount, IP67	33.20	32.12
804-515X	807504 X00	2 NC, mom., flush mount, IP67	27.23	26.36
804-516X	807505 X00	2 NO, mom., flush mount, IP67	27.50	26.62
804-5170	807603 000	1 NO + 1 NC, mom., flush mount, stainless steel, IP67	27.50	26.62
804-5171	807604 000	2 NC, mom., flush mount, stainless steel, IP67	27.23	26.36
804-5172	807605 000	2 NO, mom., flush mount, stainless steel, IP67	27.23	26.36
804-5174	808604 000	2 NC, mom., raised stainless steel, IP65	27.23	26.36
804-5175	808605 000	2 NO, mom., raised stainless steel, IP65	27.50	26.62

\*Replace X in Stock No. and Mfr.'s Type for corresponding color code for caps: 0 — neutral, 1 — yellow, 2 — green, 3 — light blue, 4 — red, 5 — black, 7 — gold, 8 — dark blue.

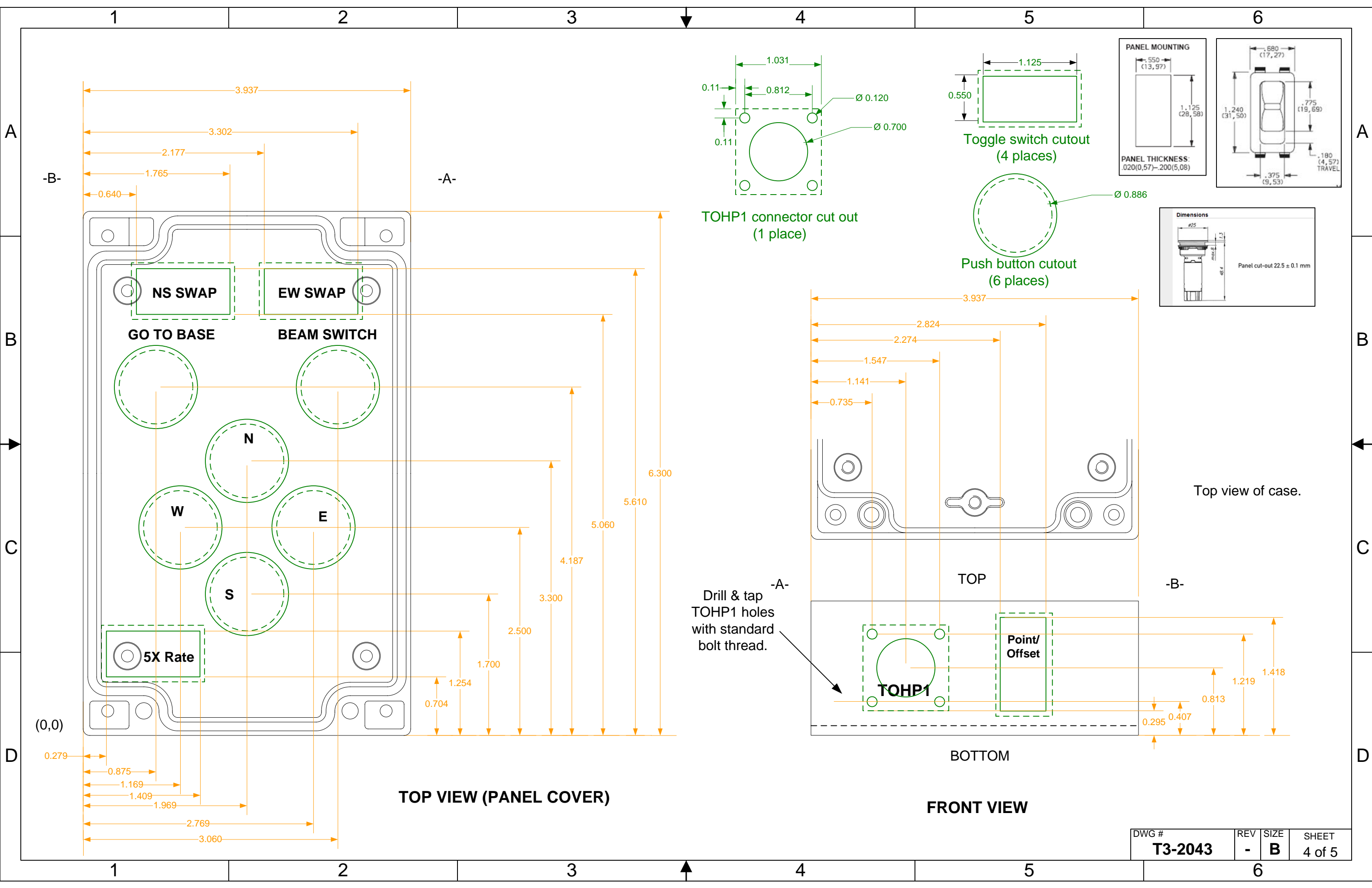


807504 X00

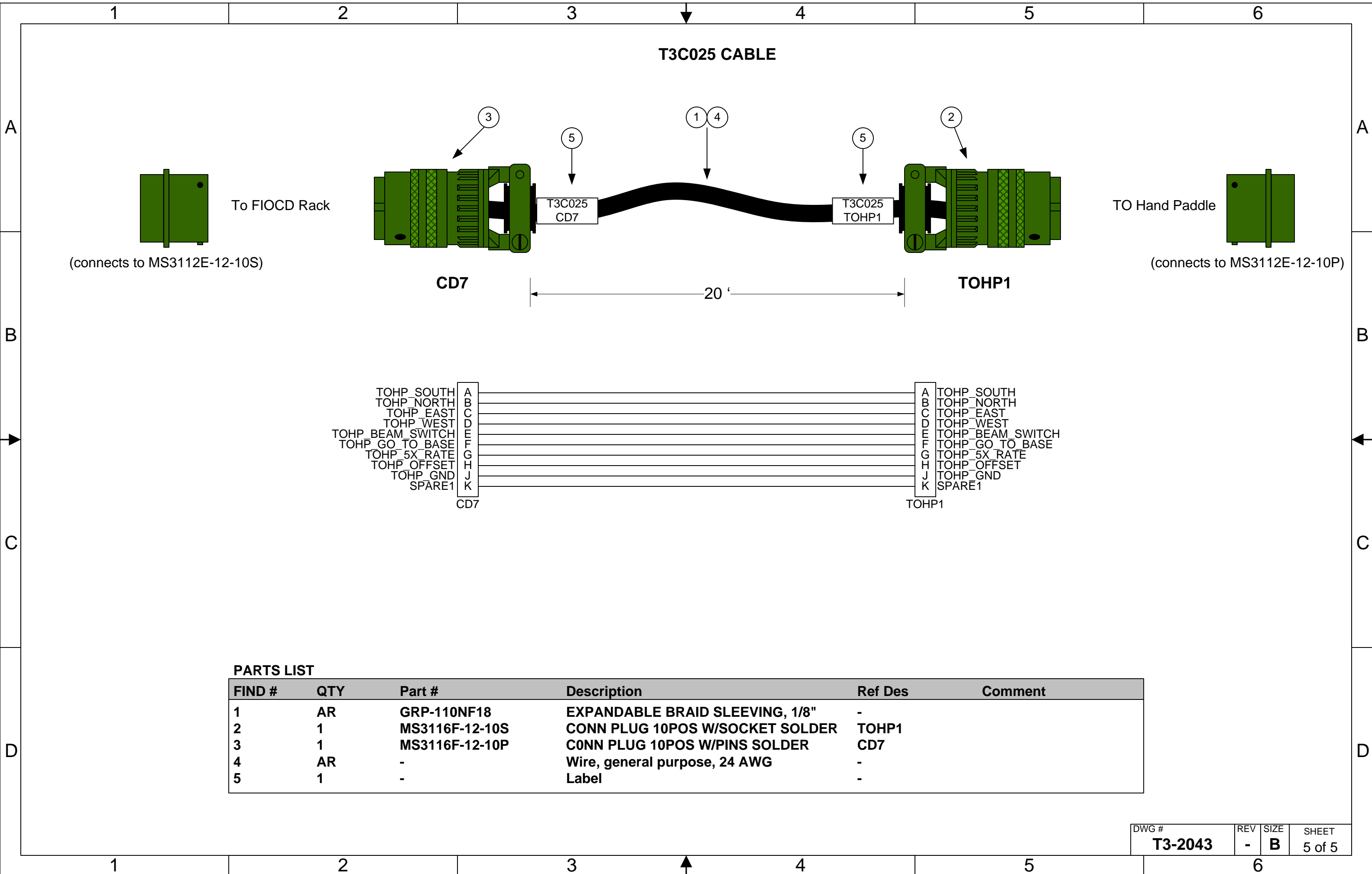


807504 X00

NOTE: Due to limited availability, it is worth noting that the 807503 & 807505 switches are interchangeable for the TO Hand Paddle design.



DWG #	REV	SIZE	SHEET
<b>T3-2043</b>	-	<b>B</b>	4 of 5



**PARTS LIST**

FIND #	QTY	Part #	Description	Ref Des	Comment
1	AR	GRP-110NF18	EXPANDABLE BRAID SLEEVING, 1/8"	-	
2	1	MS3116F-12-10S	CONN PLUG 10POS W/SOCKET SOLDER	TOHP1	
3	1	MS3116F-12-10P	CONN PLUG 10POS W/PINS SOLDER	CD7	
4	AR	-	Wire, general purpose, 24 AWG	-	
5	1	-	Label	-	