

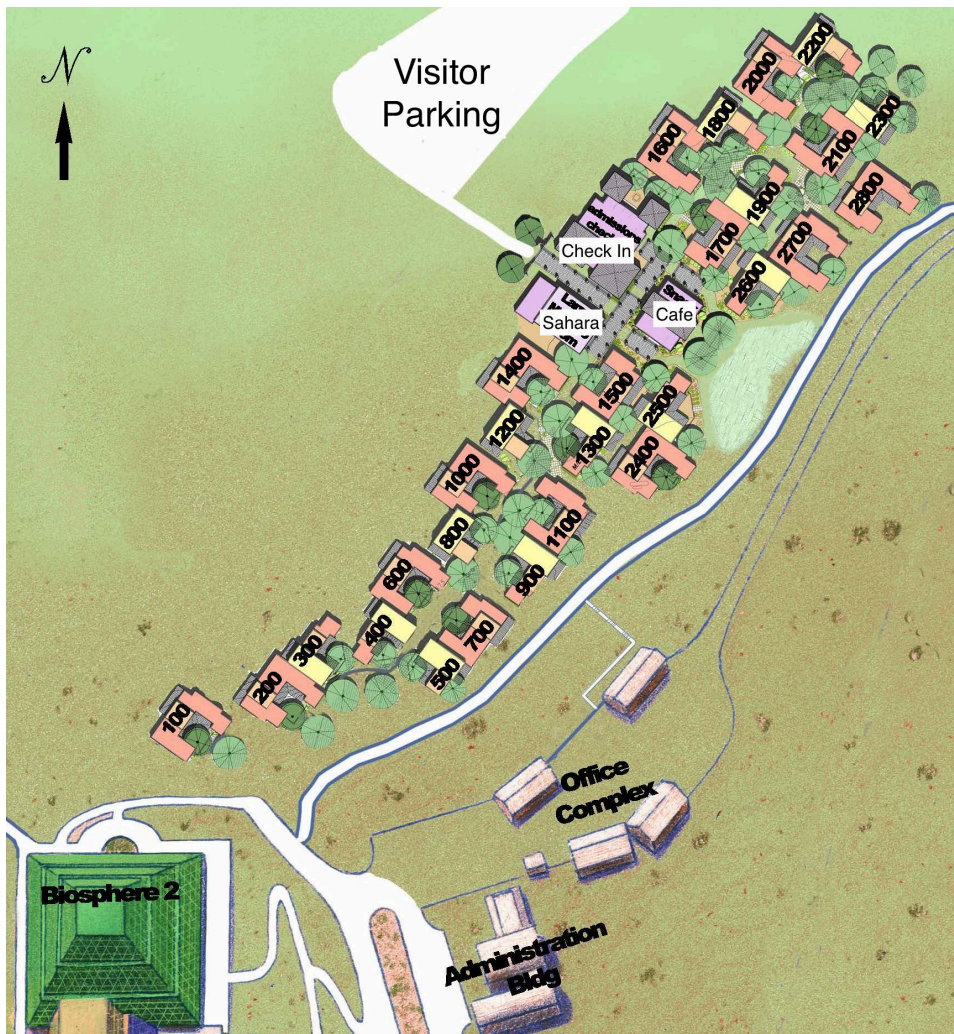
## Biosphere 2 Workshops Arrival Instructions

**Normal Operation Hours:** Monday-Sunday 9 am – 4 pm

**Check in/out:** During normal operation hours arrive at Biosphere 2 and park in the Visitor / Tour parking lot, and then walk into the Visitor Center building where staff will assist them with check-in and orientation.

**After hours Check In:** For guests arriving after the gate hours (4 pm to 9 am), they will use the call box at the visitor gate. There are instructions there; however, they will press 061 “call” for assistance. The operator will remotely buzz them through and they will follow the instructions as noted above. The operator will meet them in the Visitor Center and assist with check-in.

### Map of Biosphere 2:



**Important Phone Numbers:**

**Vishnu Reddy (LOC Chair): 808-342-8932 (Mobile)**

**Kim Land (Biosphere 2 Events Coordinator): 520-621-0436 (Office)**

**John Adams (Deputy Director, Biosphere 2): 520-490-2575 (Mobile)**