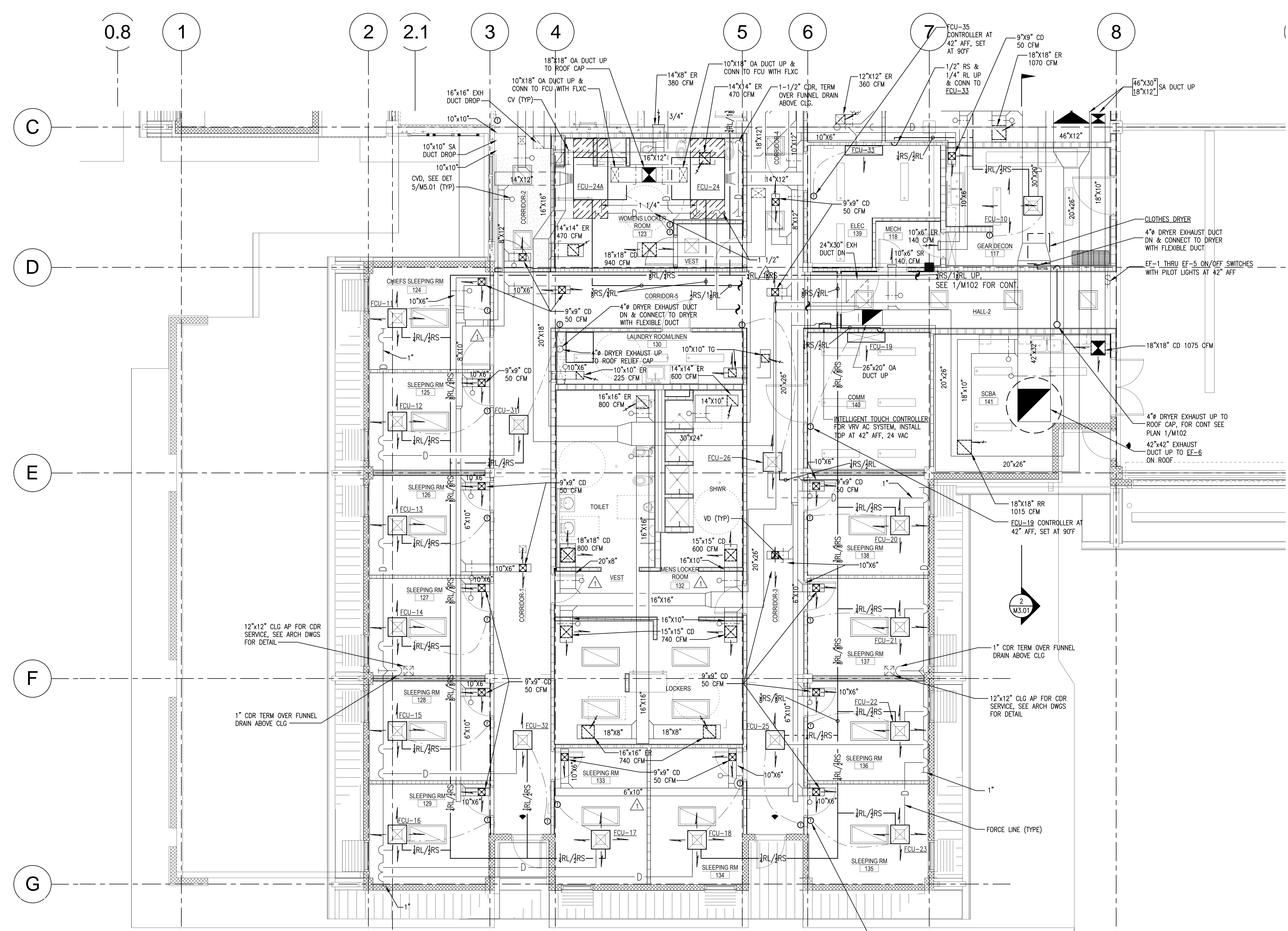


- NOTES:
- CONDENSATE DRAIN PIPE FROM ALL FAN COIL UNITS ARE FORCE LINE AND ALL SIZES SHALL BE 3/4" UNLESS OTHERWISE NOTED.
 - ALL FORCE LINE CDR SHALL TERMINATE ON TOP OF GRAVITY FLOWING CDR PIPE WITH ELBOW AND WYE & 1/8 FITTING.
 - SEE REFRIGERANT PIPING SCHEMATIC 1/M6.03 FOR REFRIGERANT PIPE SIZE REQUIREMENTS.

1 PARTIAL GROUND FLOOR HVAC DETAIL PLAN
 M4.01 SCALE: 1/4" = 1'-0" NORTH

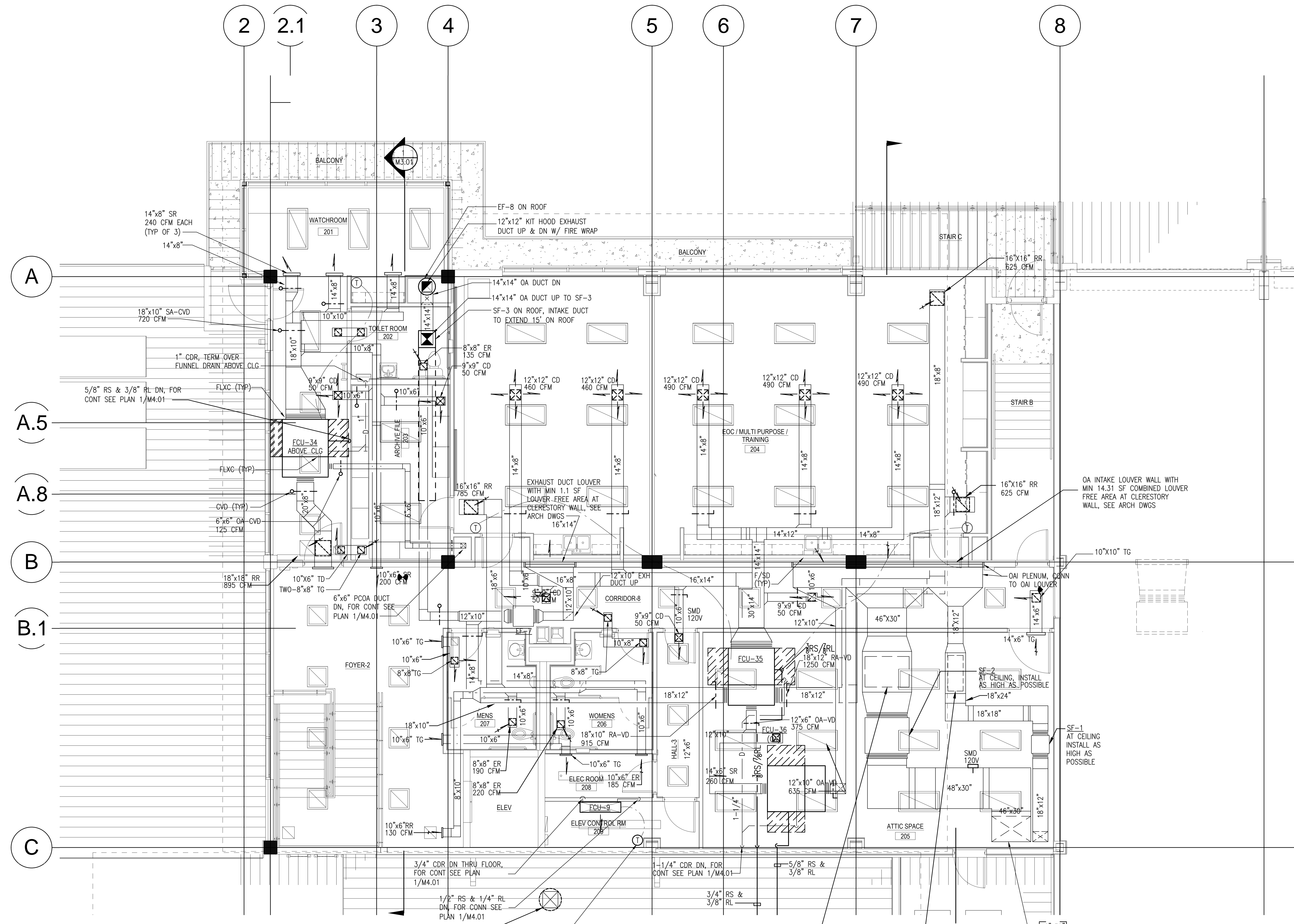
2
 M3.01

PROJECT:	
DRAWN:	ATH
CHECKED:	JL
DATE:	09/04/2013
REVISIONS:	



- NOTES:
- CONDENSATE DRAIN PIPE FROM ALL FAN COIL UNITS ARE FORCE LINE AND ALL SIZES SHALL BE 3/4" UNLESS OTHERWISE NOTED.
 - ALL FORCE LINE CDR SHALL TERMINATE ON TOP OF GRAVITY FLOWING CDR PIPE WITH ELBOW AND WYE & 1/8" FITTING.
 - SEE REFRIGERANT PIPING SCHEMATIC 1/M6.03 FOR REFRIGERANT PIPE SIZE REQUIREMENTS.

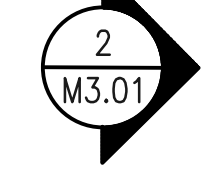
1 GROUND FLOOR HVAC DETAIL PLAN
 M4.02 SCALE: 1/4" = 1'-0" NORTH

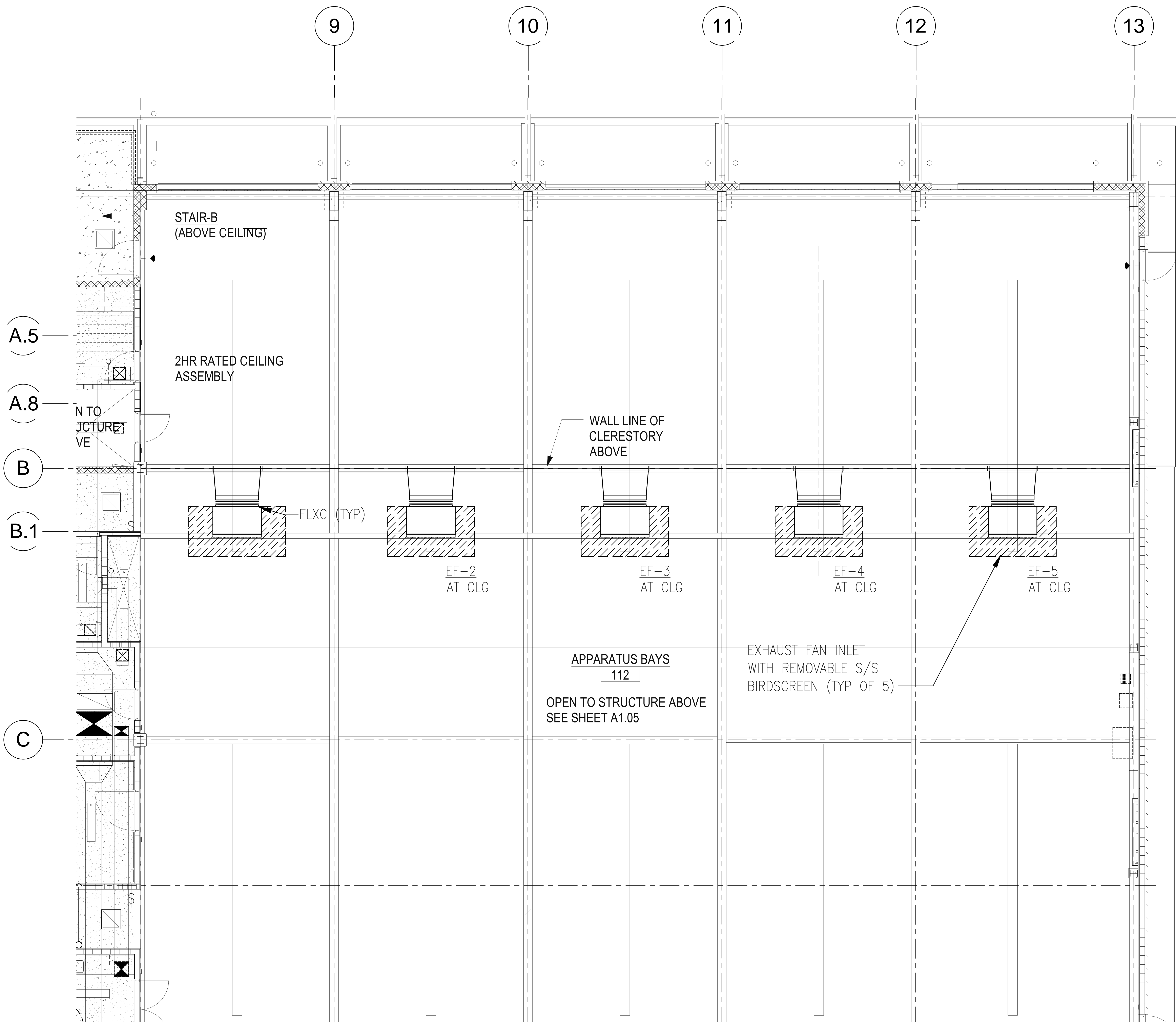


OA INTAKE ROOF CAP ON ROOF W/ 3.24 SF THROAT AREA
 FCU-9 RM THERMOSTAT, AT 42" AFF, SET AT 90° F
 FILTER SECTION WITH SIX 18"X24"X2" THICK MERV 8 FILTER AND 500 FPM MAX VELOCITY
 FILTER SECTION AT .97" COMBINED INITIAL RESISTANCE. FIRST STAGE WITH ONE 24"X24"X2" THICK MERV 8 PLEATED PRE-FILTER AND ONE 24"X24"X12" THICK ACTIVATED ALUMINA IMPREGNATED WITH 6% POTASSIUM PERMANGANATE FILTER. SECOND STAGE WITH ONE 24"X24"X2" THICK MERV 8 PLEATED PRE-FILTER AND ONE 24"X24"X12" THICK MERV 14 RIGI-FLOW PH FILTER.

- NOTES:
- CONDENSATE DRAIN PIPE FROM ALL FAN COIL UNITS ARE FORCE LINE AND ALL SIZES SHALL BE 3/4" UNLESS OTHERWISE NOTED.
 - ALL FORCE LINE CDR SHALL TERMINATE ON TOP OF GRAVITY FLOWING CDR PIPE WITH ELBOW AND WYE & 1/8 FITTING.
 - SEE REFRIGERANT PIPING SCHEMATIC 1/M6.03 FOR REFRIGERANT PIPE SIZE REQUIREMENTS.

2 PARTIAL SECOND FLOOR HVAC DETAIL PLAN
 M4.03 SCALE: 1/4" = 1'-0"





- NOTES:
- 52" FAN DIAMETER, FAN WATTS: 10 LOW/ 31 MED/ 67 HIGH; FAN AMPS: .21 LOW/ .39 MED/ .55 HIGH; 120V, 1Ø, 25 LBS OPERATING WEIGHT.
 - ALL FORCE LINE CONDENSATE DRAIN FROM INTEGRAL CONDENSATE PUMP OF ALL FAN COIL UNITS SHALL TERMINATE ON TOP OF GRAVITY FLOWING CONDENSATE DRAIN PIPE WITH WYE & 1/8 FITTING.

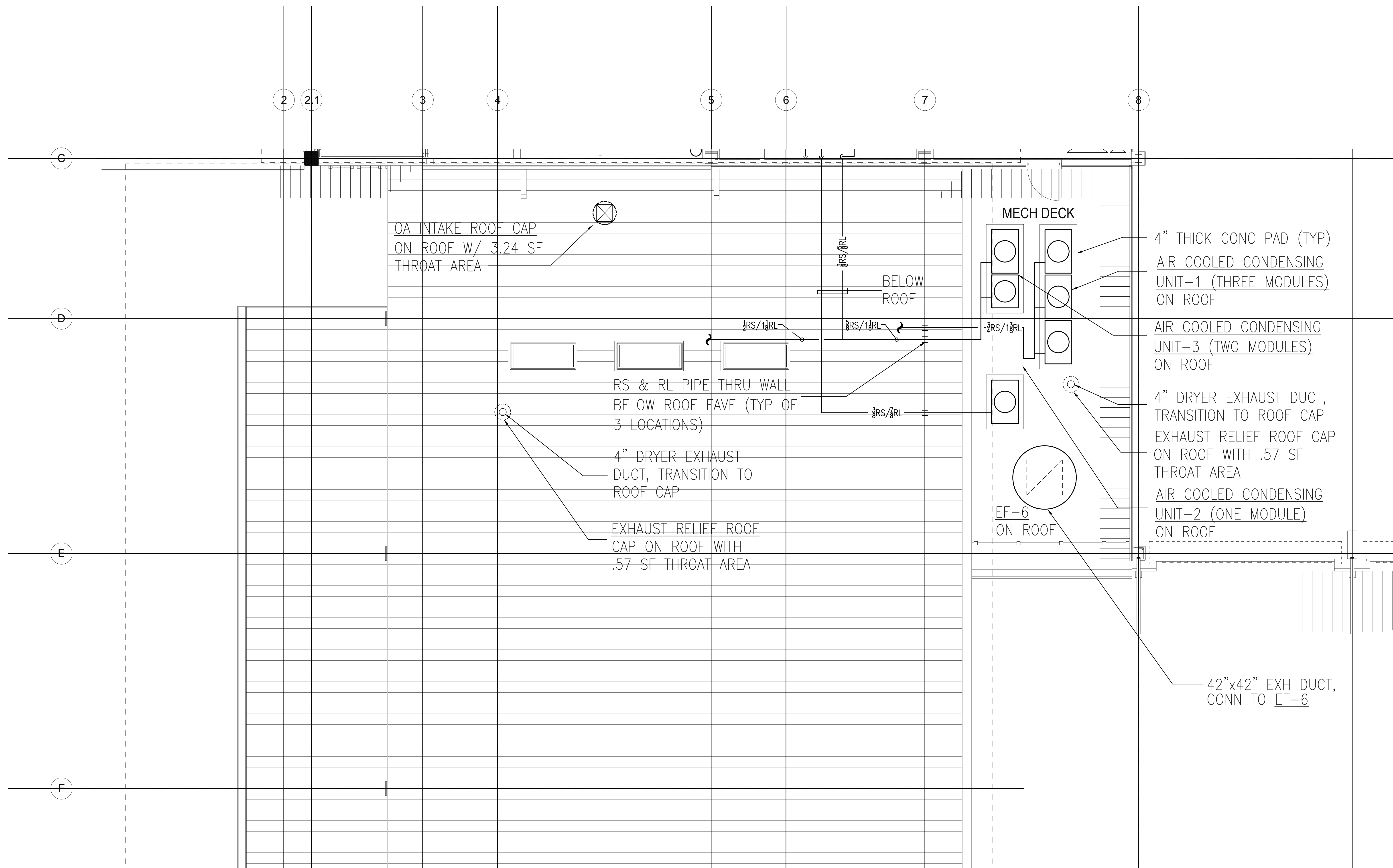
BIG ISLAND AIR CONDITIONING
 FORMALLY EMC AND CUSTOM AIRE
 73-5620 KAUPOLA ST UNIT#6
 KAILUA KONA, HAWAII 96740
 CT-31753 FAX: (808) 329-6462
 (808) 329-7672

ARFF FACILITY IMPROVEMENTS
 AT KONA INTERNATIONAL AIRPORT AT KEAHOLE

PROJECT:	
DRAWN:	ATH
CHECKED:	JL
DATE:	09/04/2013
REVISIONS	

1 APPARATUS BAY
 M4.04 SCALE: 1/4" = 1'-0" NORTH

M404



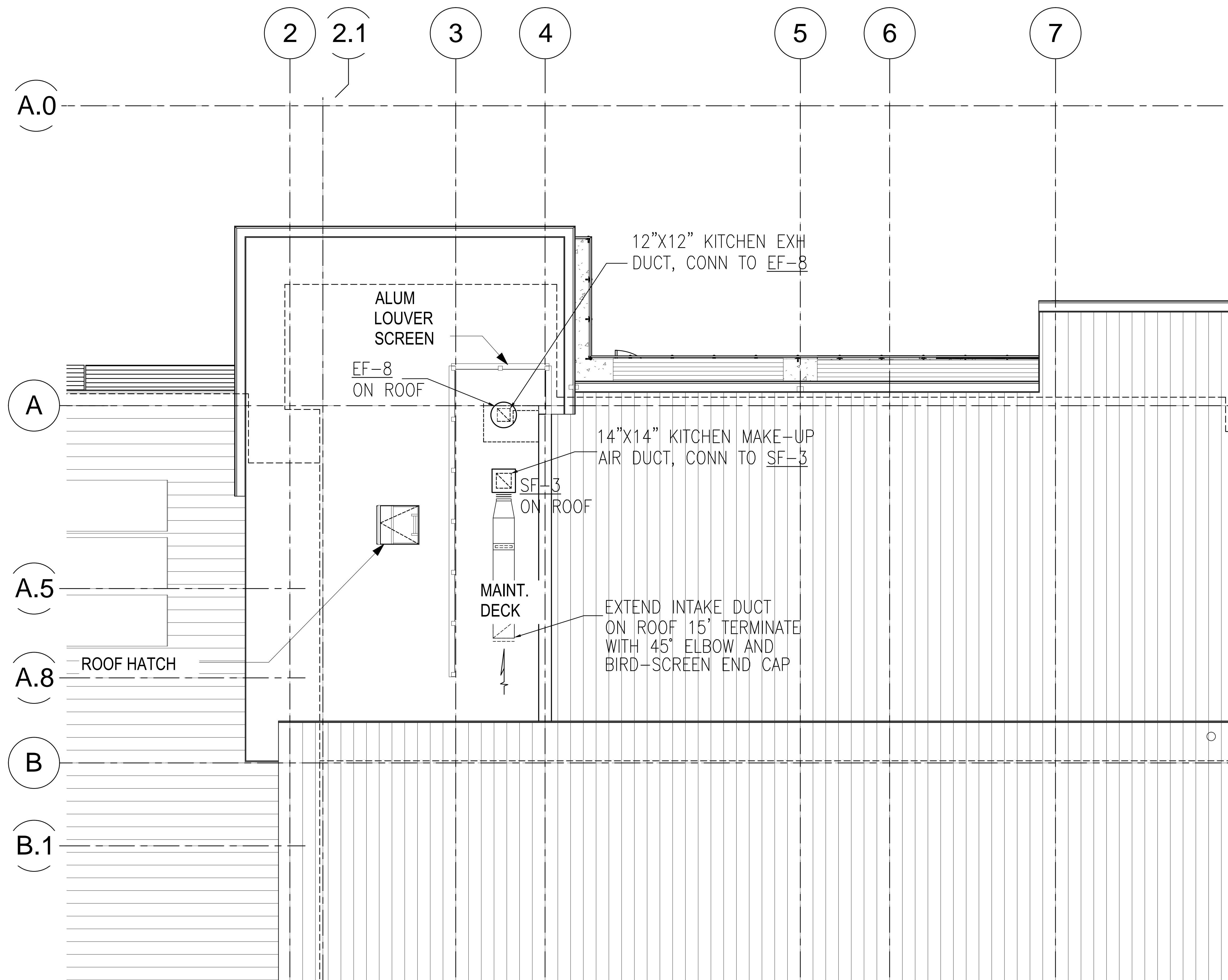
NOTES:

- SEE REFRIGERANT PIPING SCHEMATIC 1/M6.03 FOR REFRIGERANT PIPE SIZE REQUIREMENTS.

1 PARTIAL FIRST FLOOR ROOF HVAC PLAN
 M4.05 SCALE: 1/4" = 1'-0"



PROJECT:	
DRAWN:	ATH
CHECKED:	JL
DATE:	09/04/2013
REVISIONS	



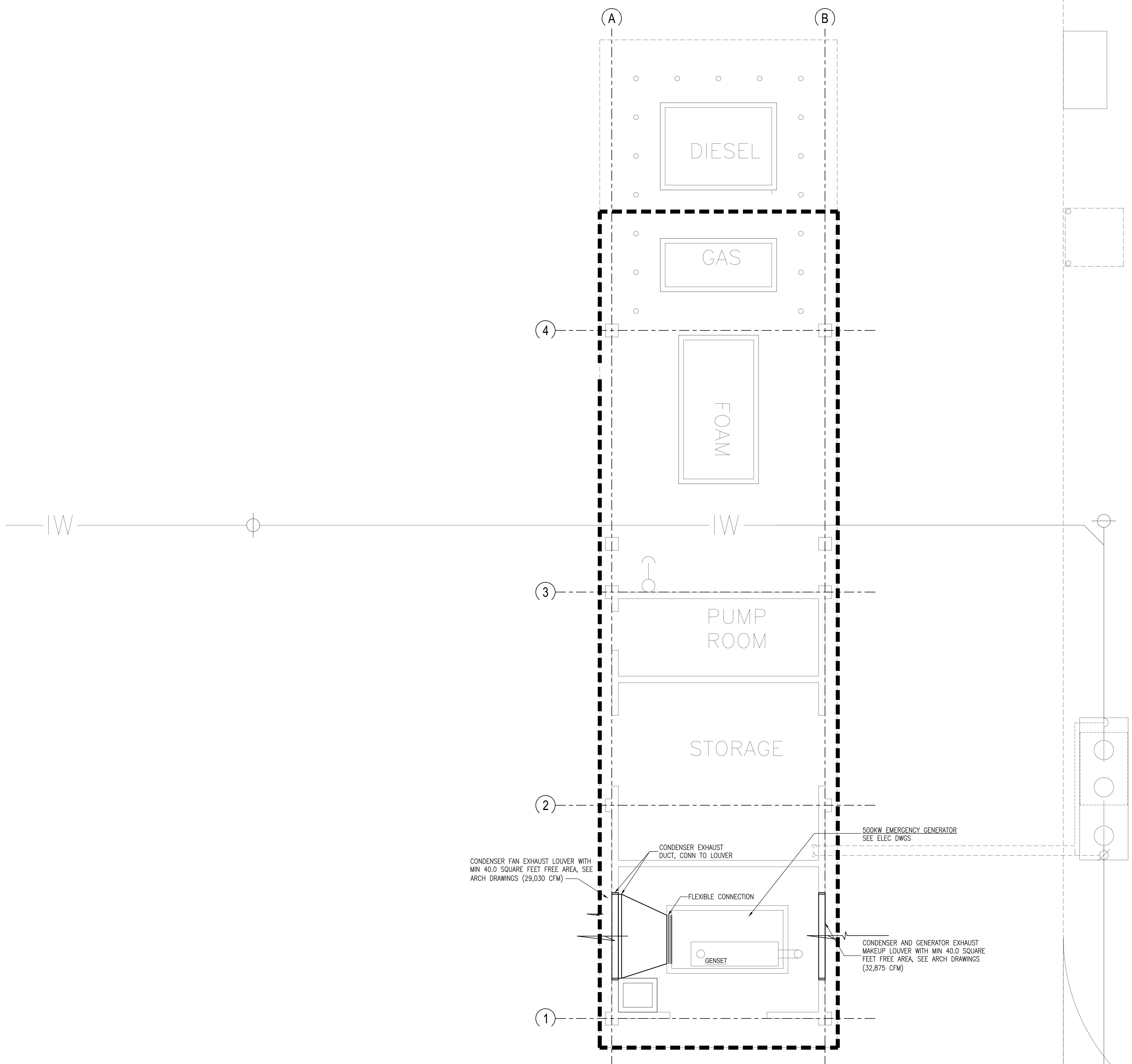
1 PARTIAL SECOND FLOOR ROOF HVAC PLAN
 M4.06 SCALE: 1/4" = 1'-0" NORTH

BIG ISLAND AIR CONDITIONING
 FORMALLY EMC AND CUSTOM AIRE
 73-5620 KAUHOLA ST UNIT#6
 KAILUA KONA, HAWAII 96740
 CT-31753 FAX: (808) 329-6462
 (808) 329-7672

ARFF FACILITY IMPROVEMENTS
 AT KONA INTERNATIONAL AIRPORT AT KEAHOLE

PROJECT:	
DRAWN:	ATH
CHECKED:	JL
DATE:	09/04/2013
REVISIONS	

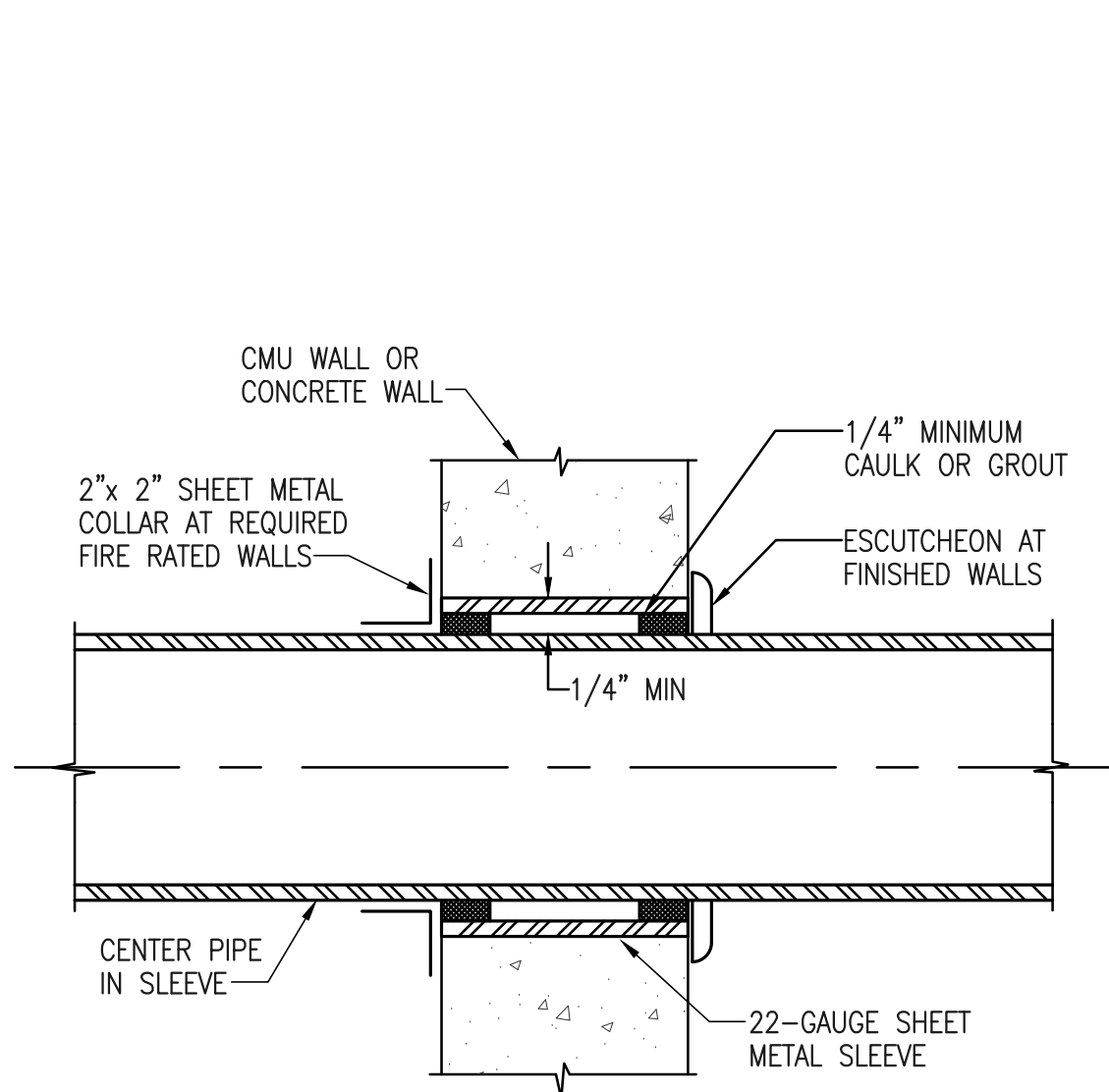
M406



1 FUEL ISLAND HVAC DETAIL PLAN
 M4.03 SCALE: 1/4" = 1'-0" 

PROJECT:	
DRAWN:	ATH
CHECKED:	JL
DATE:	09/04/2013

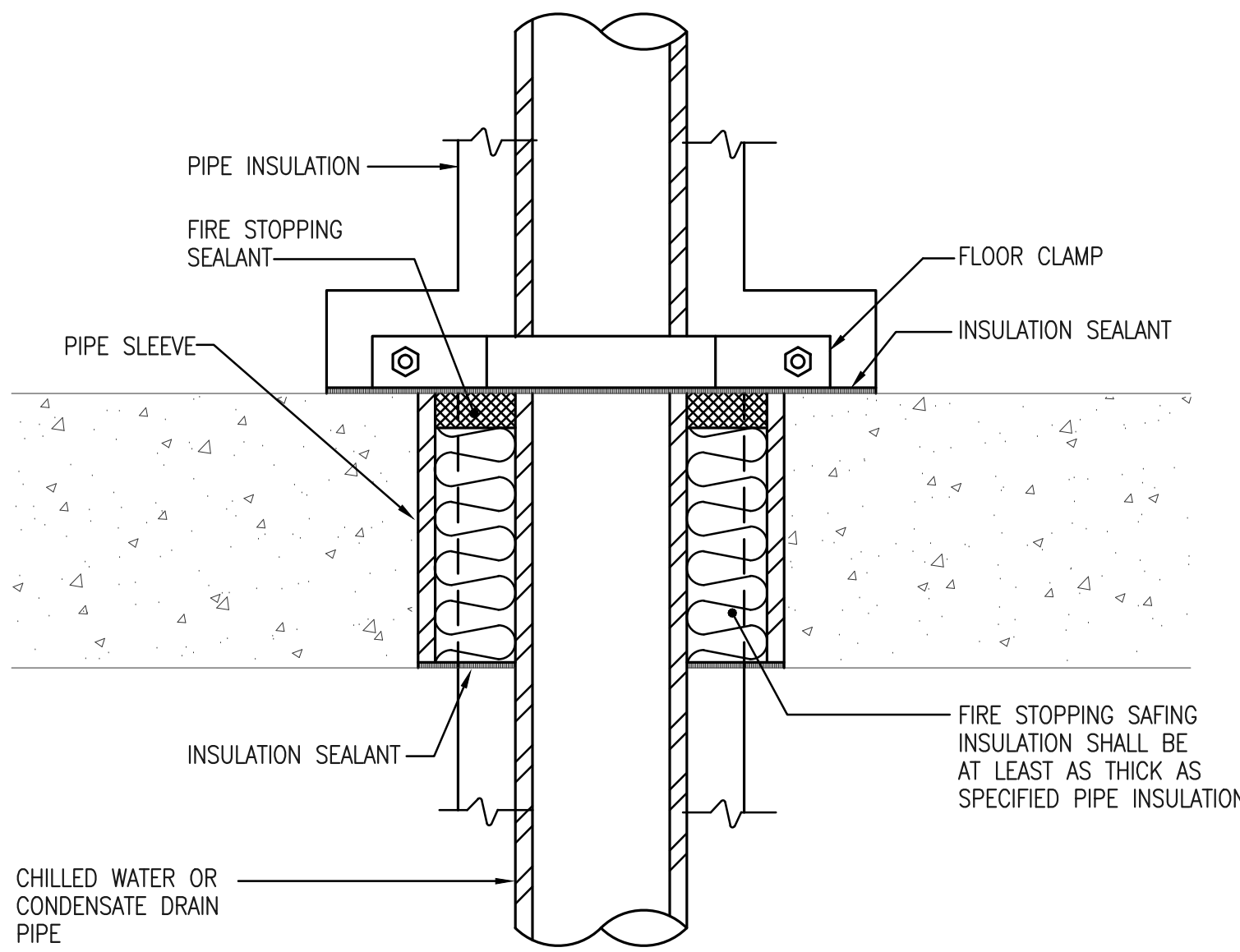
REVISIONS



NOTES:

1. PROVIDE ACOUSTIC SEALANT FOR NON-FIRE RATED FULL HEIGHT PARTITIONS. SEE ARCHITECTURAL DRAWINGS FOR LOCATIONS OF NON-FIRE RATED PARTITIONS THAT ARE FULL HEIGHT.
2. PROVIDE FIRE STOPPING FOR FIRE RATED PARTITIONS. SEE ARCHITECTURAL DRAWINGS FOR LOCATIONS OF FIRE RATED PARTITIONS AND SPECIFICATION SECTION 078400 FOR FIRE STOPPING SEALANT. ASSEMBLY SHALL BE UL RATED.

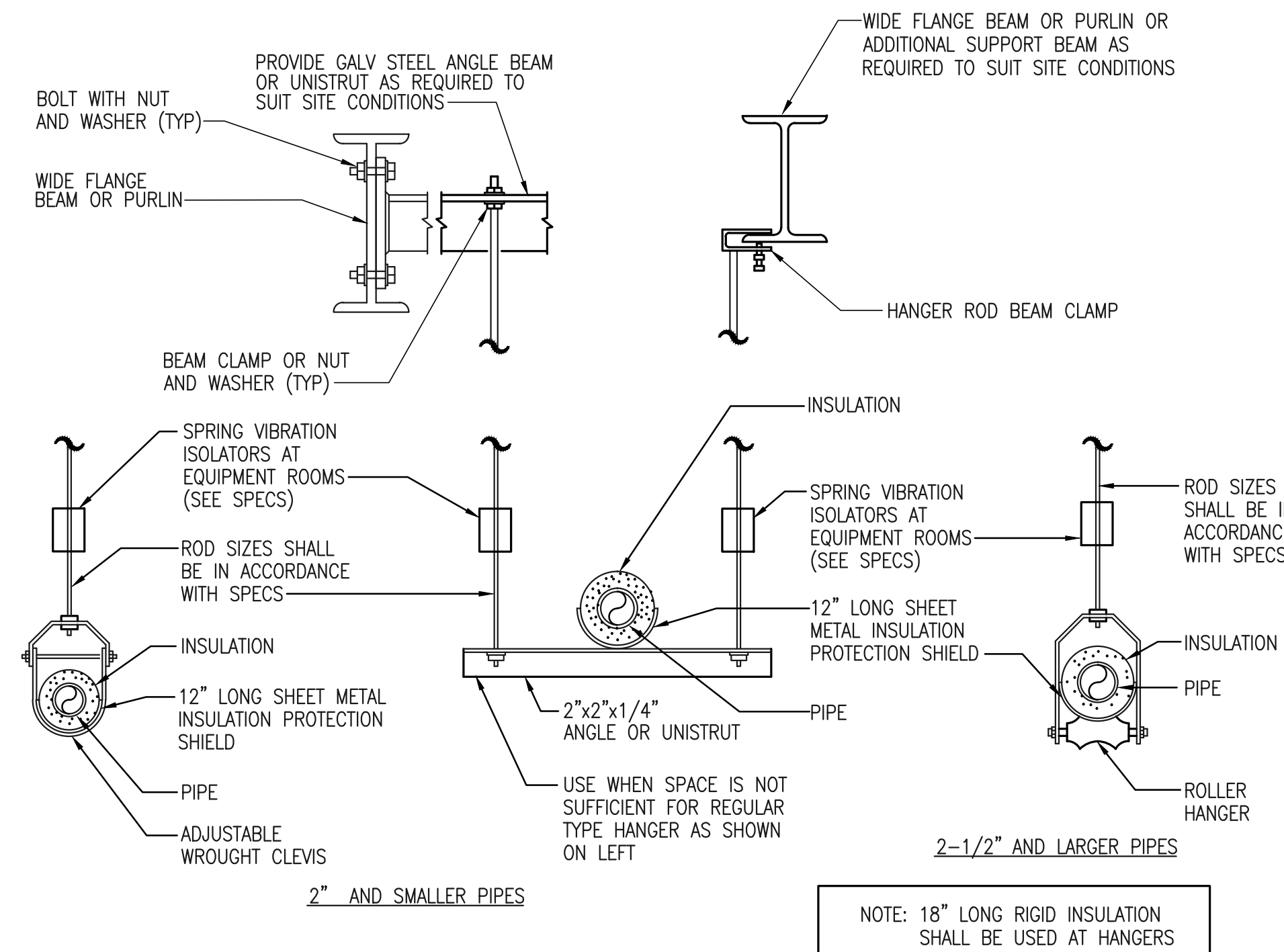
1 TYPICAL PIPE THRU INTERIOR CONCRETE WALL DETAIL
M5.01 NOT TO SCALE



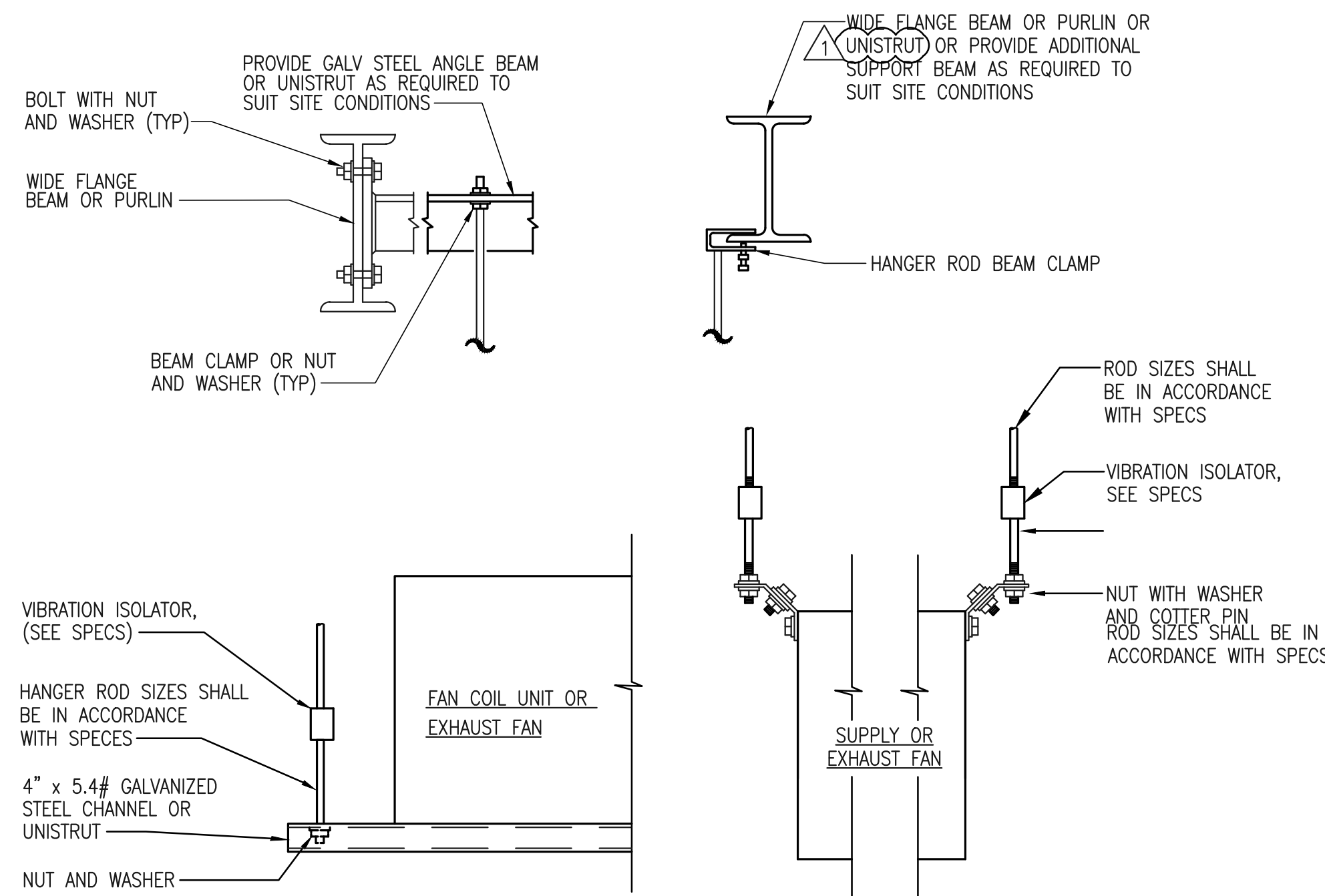
NOTE:

SEE SPECIFICATION SECTION 07841 FOR FIRE STOPPING SEALANT. ASSEMBLY SHALL BE UL LISTED.

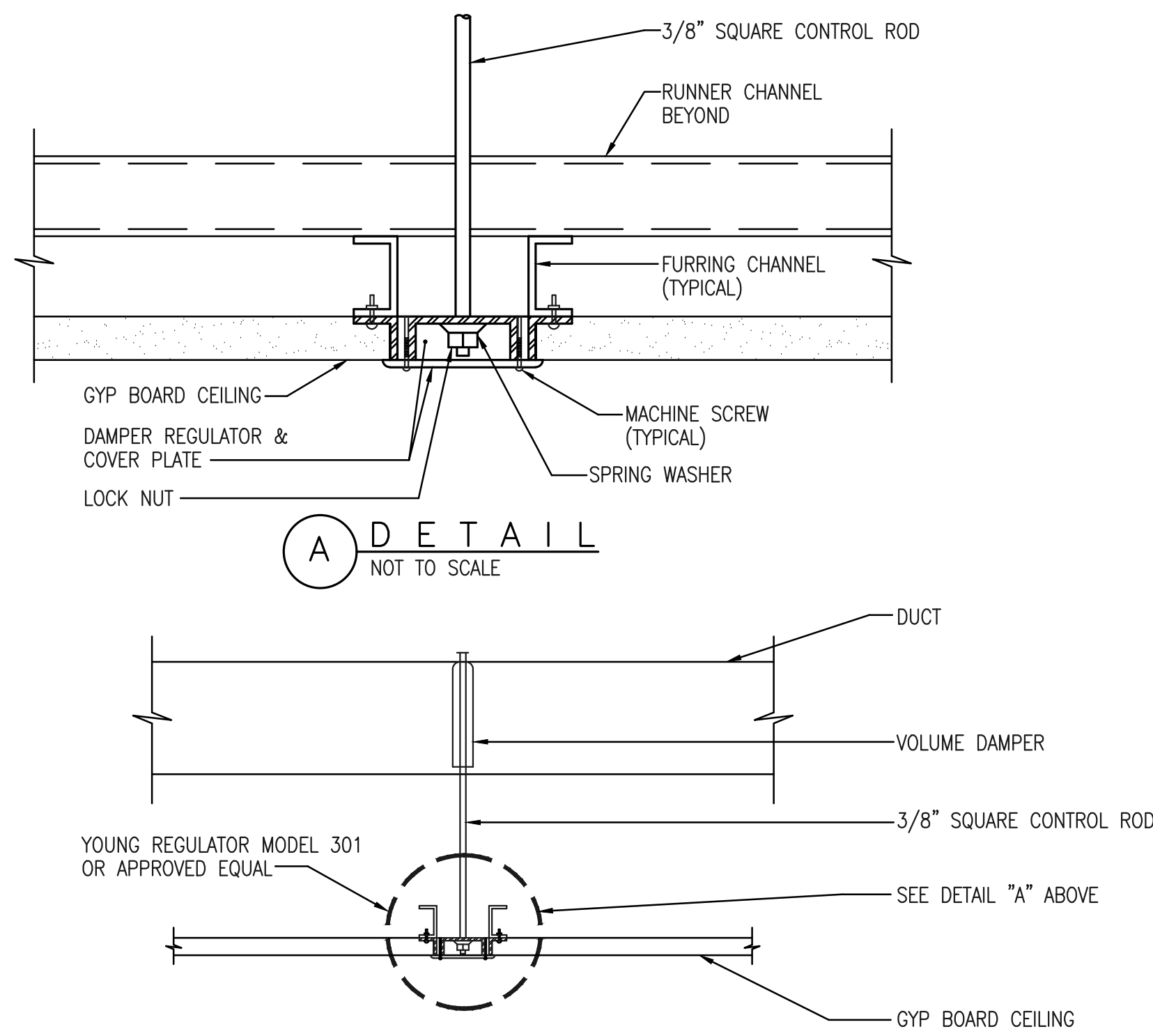
2 TYPICAL PIPE THRU FLOOR DETAIL
M5.01 NOT TO SCALE



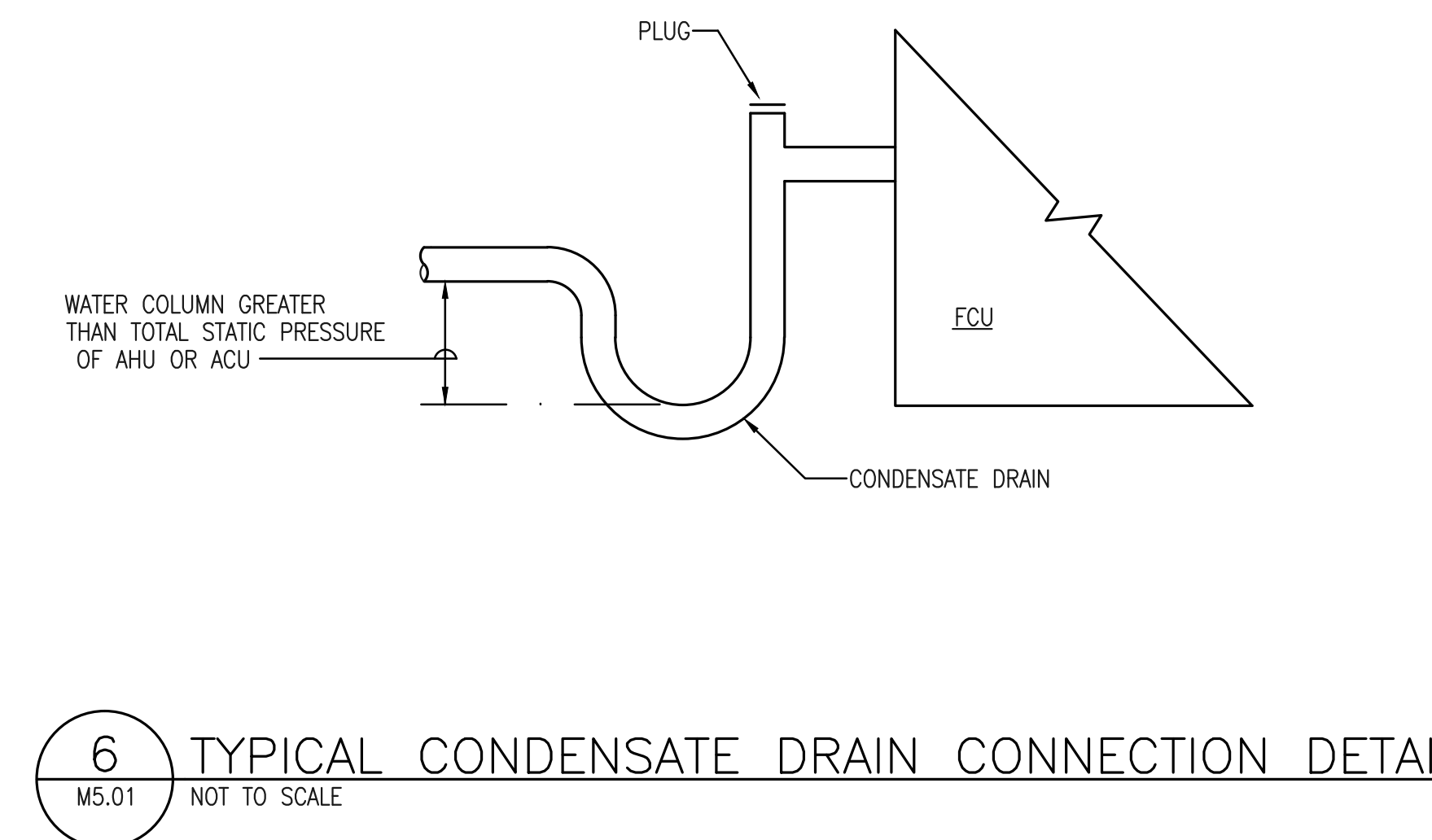
3 TYPICAL PIPE HANGER DETAIL
M5.01 NOT TO SCALE



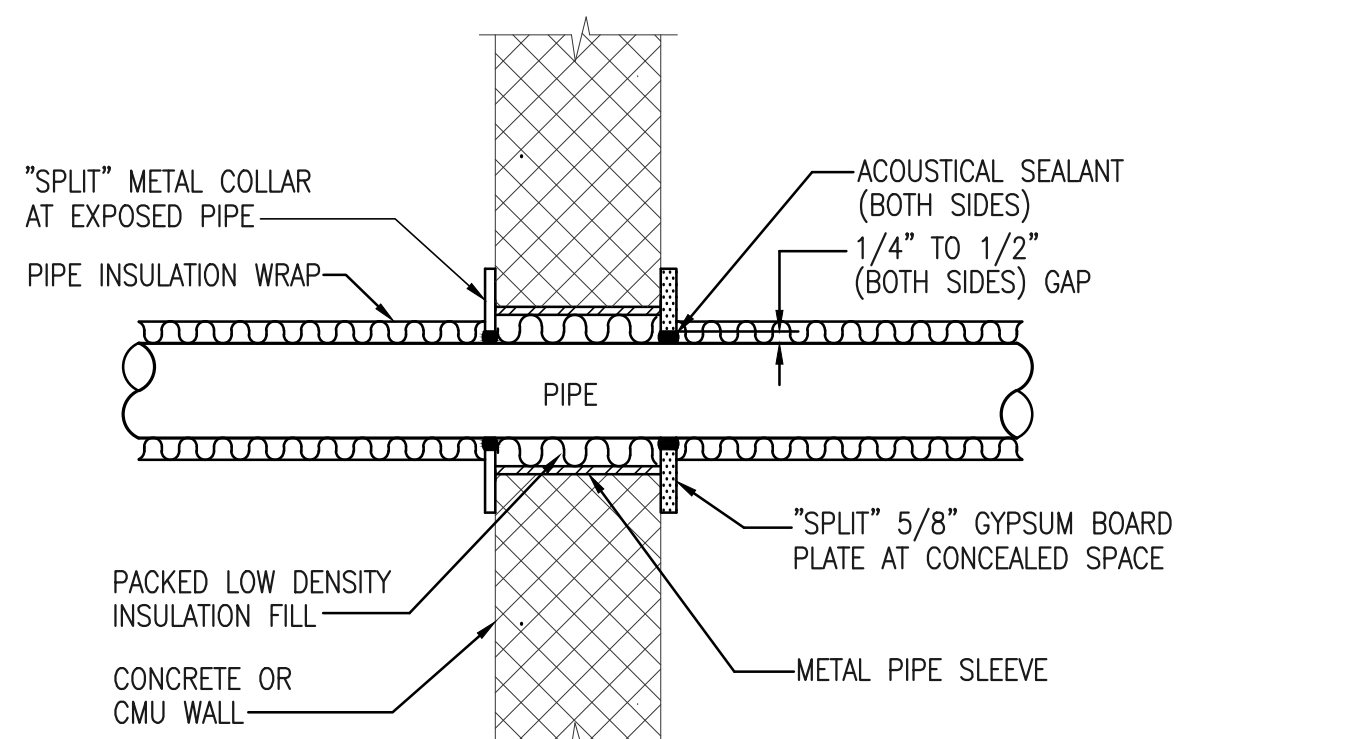
4 TYPICAL EQUIPMENT HANGER DETAIL
M5.01 NOT TO SCALE



5 TYPICAL CONCEALED DAMPER REGULATOR DETAIL
M5.01 NOT TO SCALE



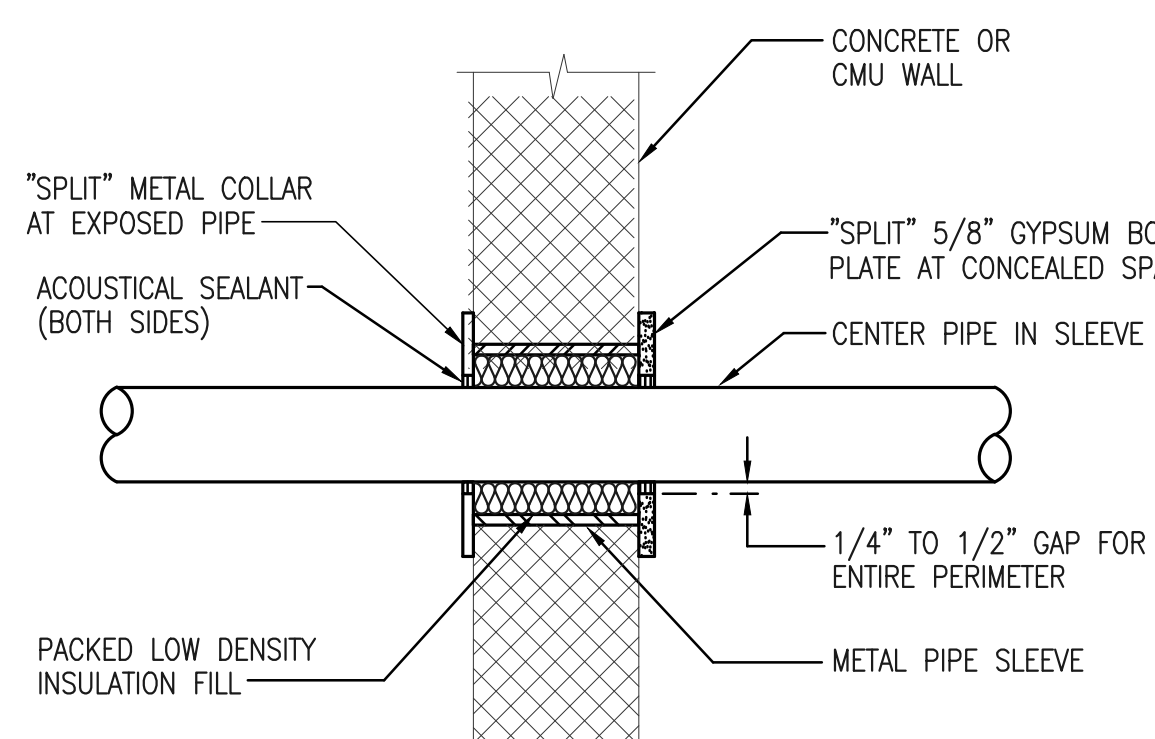
6 TYPICAL CONDENSATE DRAIN CONNECTION DETAIL
M5.01 NOT TO SCALE



NOTES:

1. PROVIDE ACOUSTIC SEALANT FOR NON-FIRE RATED FULL HEIGHT PARTITIONS. SEE ARCHITECTURAL DRAWINGS FOR LOCATIONS OF NON-FIRE RATED PARTITIONS THAT ARE FULL HEIGHT.
2. PROVIDE FIRE STOPPING FOR FIRE RATED PARTITIONS. SEE ARCHITECTURAL DRAWINGS FOR LOCATIONS OF FIRE RATED PARTITIONS AND SPECIFICATION SECTION 078400 FOR FIRE STOPPING SEALANT. ASSEMBLY SHALL BE UL RATED.

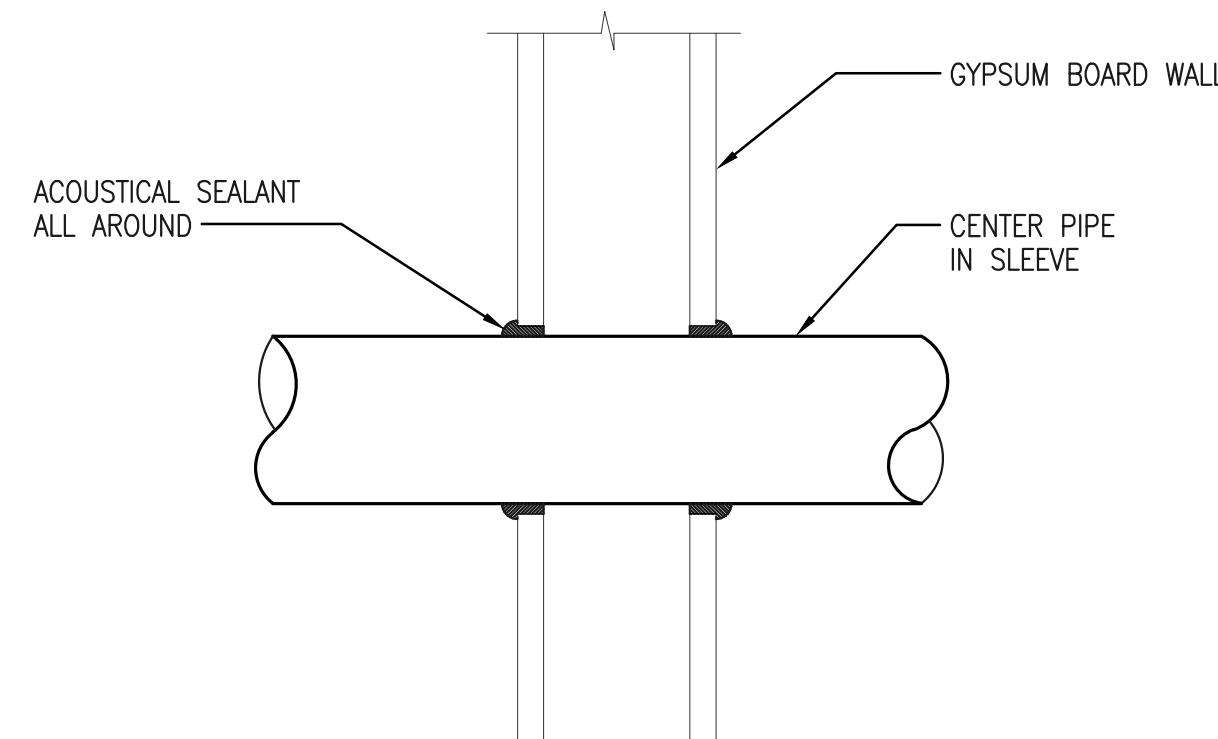
7 PIPE PENETRATION DETAIL
M5.01 NOT TO SCALE



NOTES:

1. PROVIDE ACOUSTIC SEALANT FOR NON-FIRE RATED FULL HEIGHT PARTITIONS. SEE ARCHITECTURAL DRAWINGS FOR LOCATIONS OF NON-FIRE RATED PARTITIONS THAT ARE FULL HEIGHT.
2. PROVIDE FIRE STOPPING FOR FIRE RATED PARTITIONS. SEE ARCHITECTURAL DRAWINGS FOR LOCATIONS OF FIRE RATED PARTITIONS AND SPECIFICATION SECTION 078400 FOR FIRE STOPPING SEALANT. ASSEMBLY SHALL BE UL RATED.

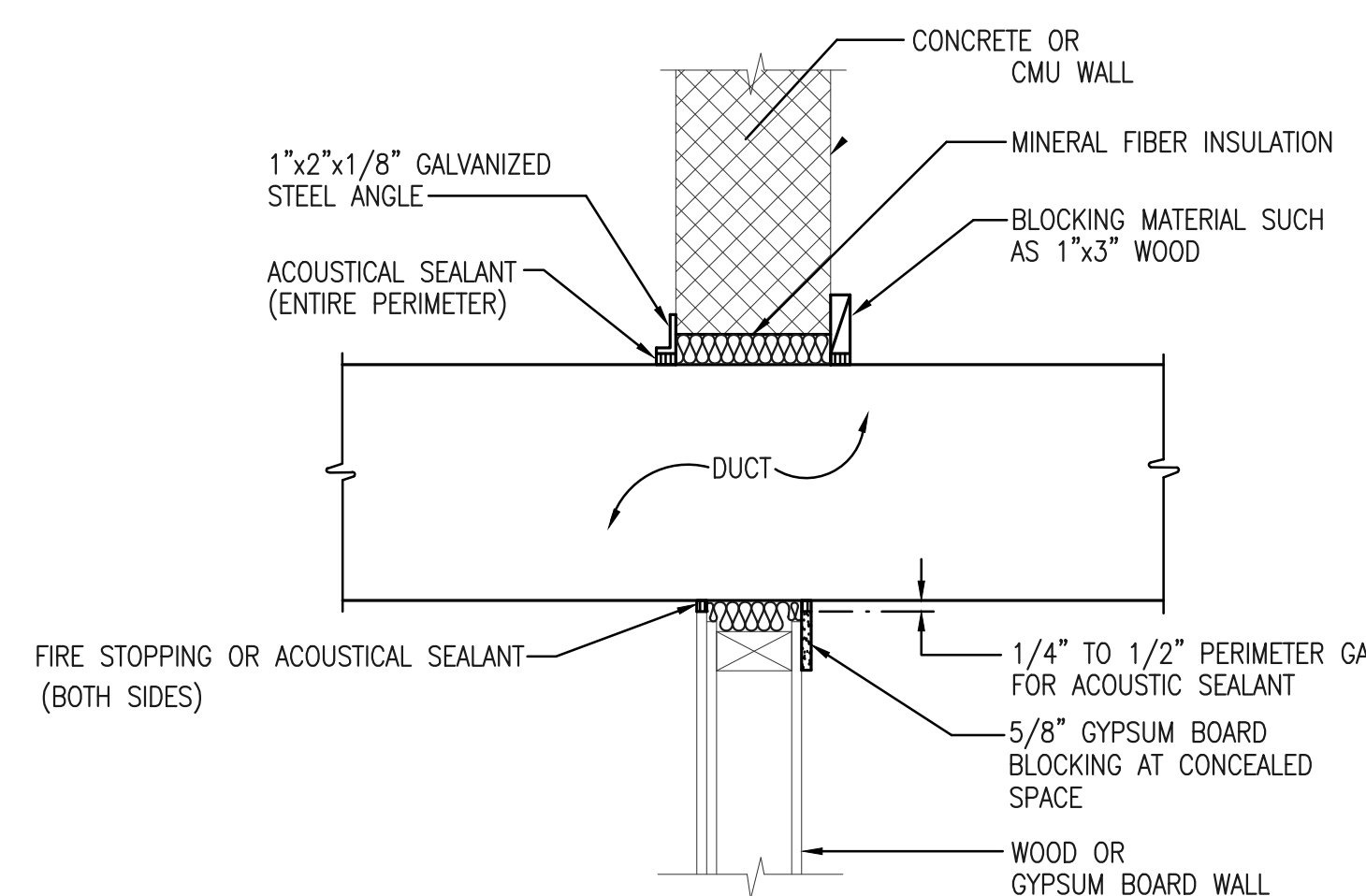
8 TYPICAL PIPE PENETRATION DETAIL
M5.01 NOT TO SCALE



NOTES:

1. PROVIDE ACOUSTIC SEALANT FOR NON-FIRE RATED FULL HEIGHT PARTITIONS. SEE ARCHITECTURAL DRAWINGS FOR LOCATIONS OF NON-FIRE RATED PARTITIONS THAT ARE FULL HEIGHT.
2. PROVIDE FIRE STOPPING FOR FIRE RATED PARTITIONS. SEE ARCHITECTURAL DRAWINGS FOR LOCATIONS OF FIRE RATED PARTITIONS AND SPECIFICATION SECTION 078400 FOR FIRE STOPPING SEALANT. ASSEMBLY SHALL BE UL RATED.

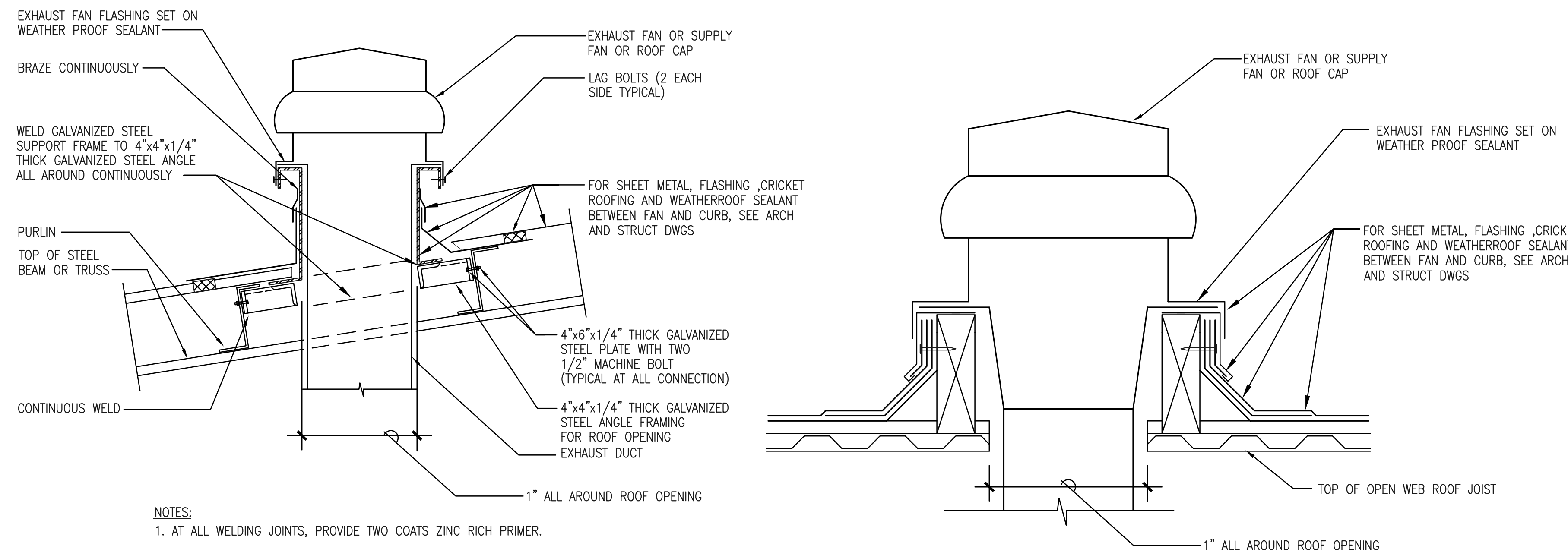
9 TYPICAL PIPE THRU DRYWALL DETAIL
M5.01 NOT TO SCALE



NOTES:

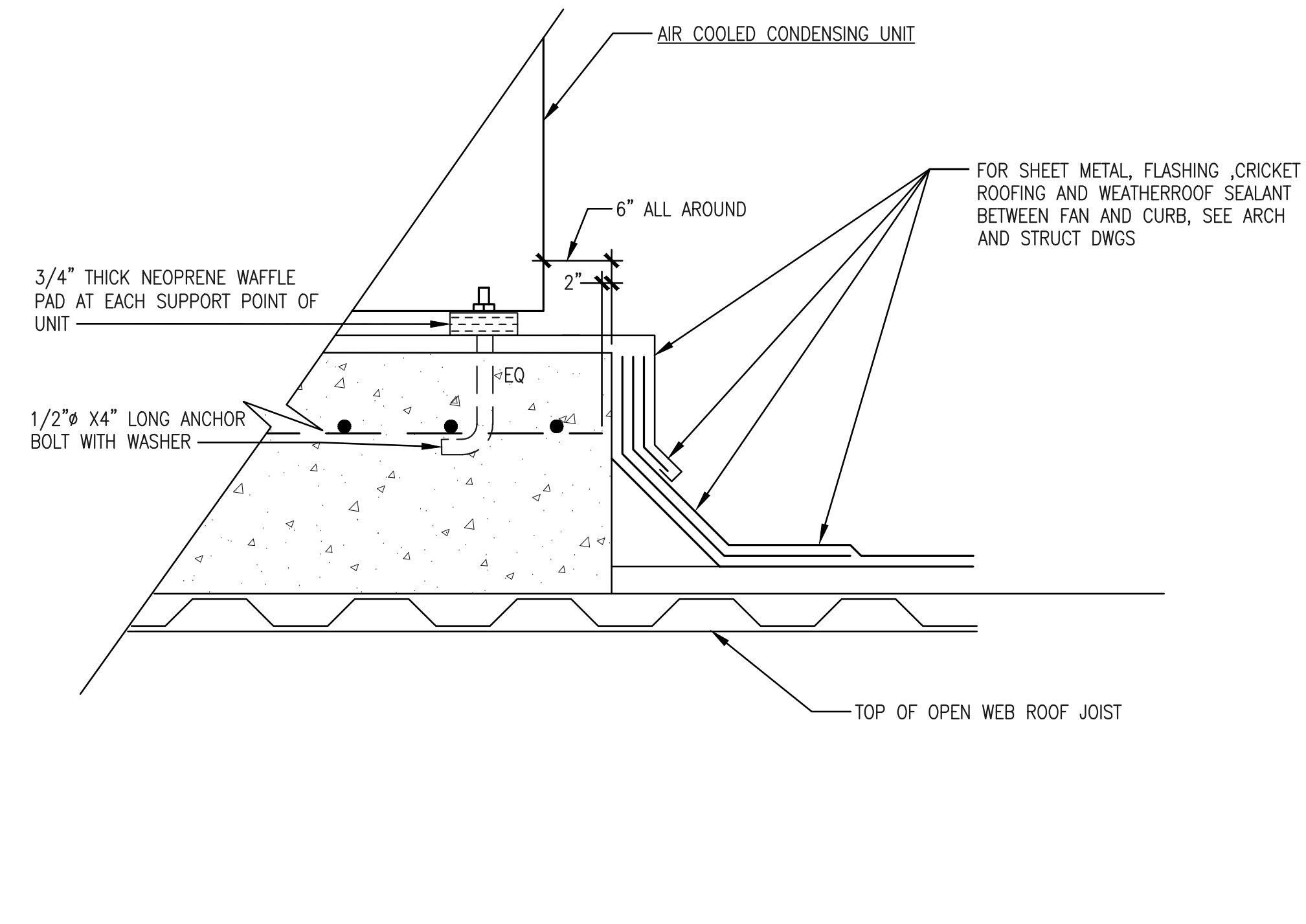
1. PROVIDE ACOUSTIC SEALANT FOR NON-FIRE RATED FULL HEIGHT PARTITIONS. SEE ARCHITECTURAL DRAWINGS FOR LOCATIONS OF NON-FIRE RATED PARTITIONS THAT ARE FULL HEIGHT.
2. PROVIDE FIRE STOPPING FOR FIRE RATED PARTITIONS. SEE ARCHITECTURAL DRAWINGS FOR LOCATIONS OF FIRE RATED PARTITIONS AND SPECIFICATION SECTION 078400 FOR FIRE STOPPING SEALANT. ASSEMBLY SHALL BE UL RATED.
3. FIRE RATED WALL SHALL BE PROVIDED WITH FIRE DAMPERS. WALL OPENING CLOSURE ANGLE SHALL BE IN ACCORDANCE WITH FIRE DAMPER UL LISTING.

10 TYPICAL DUCT THRU WALL DETAIL
M5.01 NOT TO SCALE

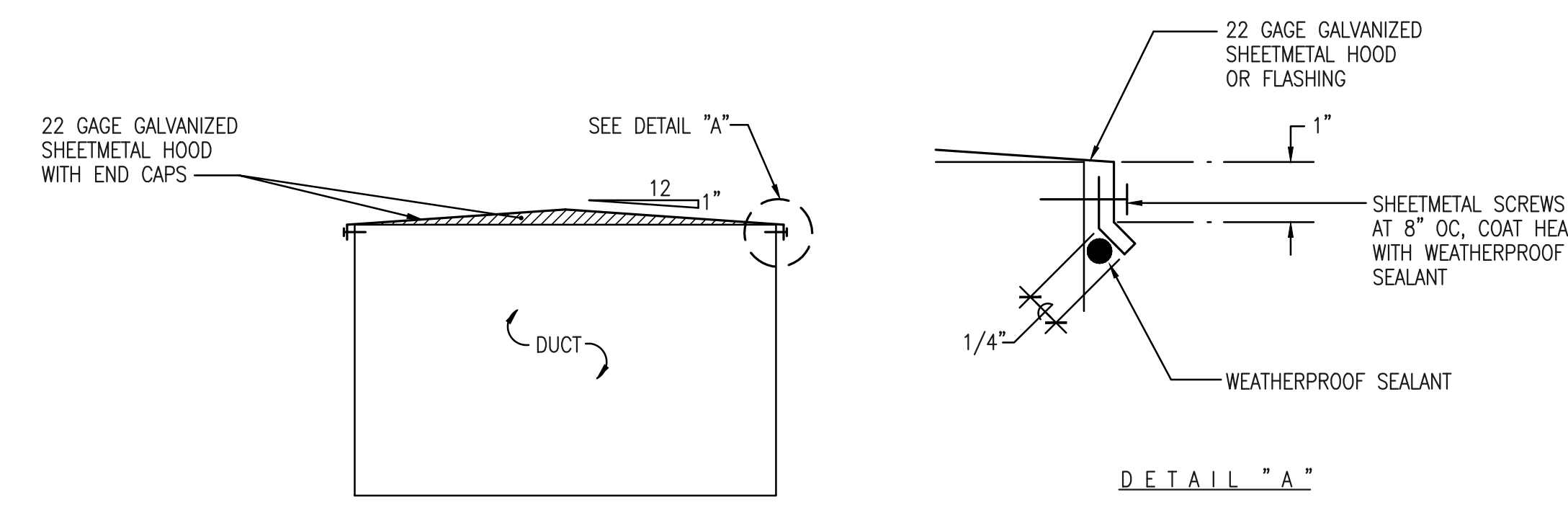


NOTES:
1. AT ALL WELDING JOINTS, PROVIDE TWO COATS ZINC RICH PRIMER.

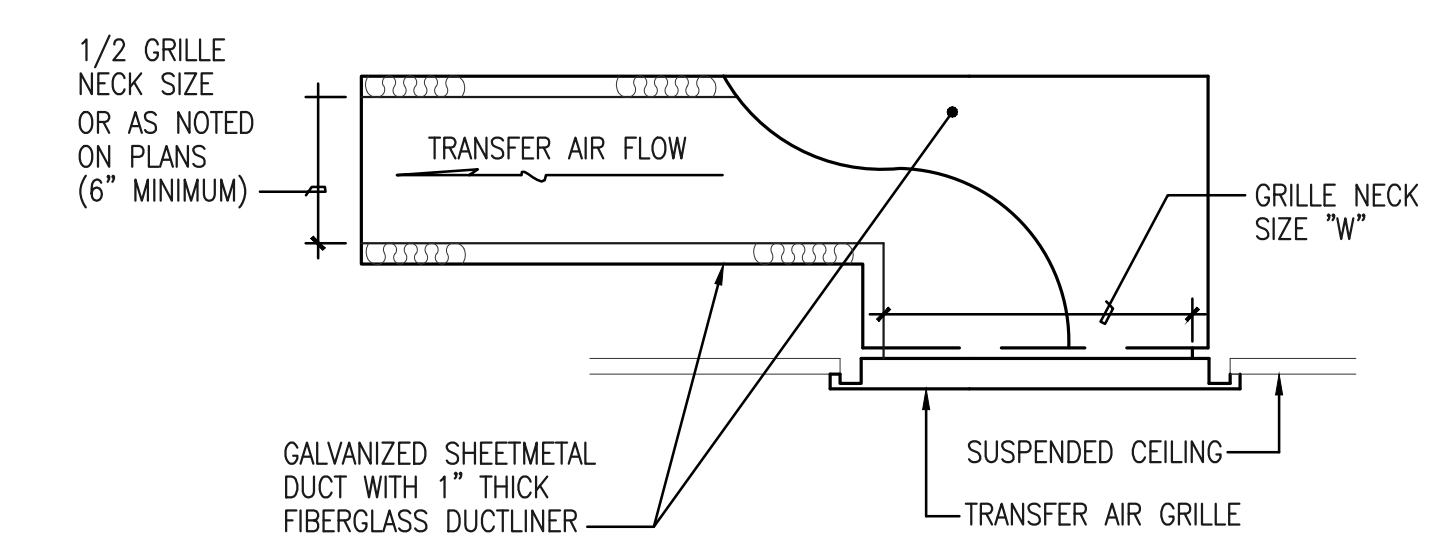
1 TYPICAL EQUIPMENT ON ROOF SUPPORT DETAIL
M5.02 NOT TO SCALE



2 TYPICAL AIR COOLED CONDENSING UNIT ON ROOF MOUNTING DETAIL
M5.02 NOT TO SCALE



3 TYPICAL DUCT HOOD AND FLASHING DETAIL
M5.02 NOT TO SCALE



4 TYPICAL TRANSFER AIR GRILLE AND SUB DUCT DETAIL
M5.02 NOT TO SCALE

BIG ISLAND AIR CONDITIONING
FORMALLY EMC AND CUSTOM AIR
CONDITIONING
1000 W. KAILUA KONA, HAWAII 96740
KAILUA KONA, HAWAII 96740
CT-31753 FAX: (808) 329-6462
(808) 329-7672

ARFF FACILITY IMPROVEMENTS
AT KONA INTERNATIONAL AIRPORT AT KEAHOLE

PROJECT:	
DRAWN:	ATH
CHECKED:	JL
DATE:	09/04/2013
REVISIONS	

M502

FAN SCHEDULE																			
UNIT NO	MANUFACTURER AND MODEL	LOCATION	SERVICE	TYPE	CFM	SP INCHES	WHEEL DIAMETER INCHES	TIP SPEED FPM	OUTLET VELOCITY FPM	DRIVE	FAN RPM	HP	VOLTS	Φ	SONES	OPR WT POUNDS	ISOLATOR		REMARKS
																	TYPE	DEFL	
EF-1, 2, 3, 4, 5	PENBARRY ZEPHYR ZC15	CEILING	APPARATUS BAYS EXHAUST	INLINE CENTRIFUGAL	3015	.25	-	1747	1493	BELT	445	1/2	115	1	10.15	179			EACH UNIT IS CONTROLLED BY ON/OFF SWITCH WITH PILOT LIGHT
EF-6	PENBARRY DOMEX JB48	ROOF	GENERAL EXHAUST	ROOF CENTRIFUGAL	10155	.5	-	3617	755	BELT	275	2	208	3	7.98	775			CONTROLLED BY TIME CLOCK IN JAN 110.
EF-7	PENBARRY ZEPHYR INLINE Z121STDA	CEILING	GENERAL EXHAUST	INLINE CENTRIFUGAL	730	.38	-	1951	793	DIRECT	932	1/5	115	1	4.61	46			WITH SPEED CONTROLLER, CONTROLLED BY TIME CLOCK IN JAN 110.
EF-8	PENBARRY FUMEX FX14B	ROOF	KITCHEN HOOD EXHAUST	UPBLAST ROOF CENTRIFUGAL	1200	1	-	4835	728	BELT	1163	1/2	115	1	14.04	115			CONTROLLED BY ON/OFF SWITCH WITH PILOT LIGHT, INTERLOCK WITH SF-3
SF-1	PENBARRY SX125BHC	CEILING	SCBA EXHAUST MAKE-UP	INLINE CENTRIFUGAL	1075	1.75	-	6701	388	BELT	1612	3/4	208	3	17.24	100			* 14.9 INLET SONES AND 12.5 RADIATED SONES. CONTROLLED BY TIME CLOCK IN JAN 110.
SF-2	PENBARRY SX420BC	CEILING	GENERAL EXH MAKE-UP	INLINE CENTRIFUGAL	8915	.5	-	3745	417	BELT	326	2	208	3	7.16	725			* 13.6 INLET SONES AND 11.2 RADIATED SONES. CONTROLLED BY TIME CLOCK IN JAN 110.
SF-3	PENBARRY FS12B	ROOF	KITCHEN HOOD EXH MAKE-UP	ROOF CENTRIFUGAL	1100	.38	-	1921	753	BELT	570	1/4	115	1	0.00	220			INTERLOCK WITH EF-8, PROVIDE WITH 15 FOOT EXTENDED INTAKE DUCT, 2" THICK MERV 8 FILTER SECTION AT 500 FPM MAXIMUM VELOCITY; AND WEATHERHOOD WITH S/S BIRDSCREEN

AIR COOLED CONDENSING UNIT SCHEDULE																						
UNIT NO	MANUFACTURER AND MODEL	LOCATION	TYPE	REFRIG.	TOTAL CAPACITY (TONS)	AMB. AIR TEMP. (°F)	COMPRESSOR				CONDENSER FAN				EER	ELEC POWER SUPPLY				MAX. SOUND PRESSURE (dBA)	OPER. WT. (LBS)	REMARKS
							QTY.	kW	RLA	MSC	QTY.	kW	FLA	CFM		VOLTS	φ	MCA	MOP			
ACCU-1	DAIKIN MODEL RXYQ96PBTJ	ROOF	VRV HEAT PUMP	R-410A	28	95	2	2.2	7.8	131	2	.35	1.0	8230	-	208	3	43	50	60	620	ACCU-1 SYSTEM MODEL RXYQ336PBTJ OR APPROVED EQUAL WITH THREE MODULES, CONNECTED INTO SERIES. PROVIDE INDIVIDUAL POWER, DISCONNECT SWITCH AND FUSE FOR EACH MODULE. SERVES FCU-1 THROUGH FCU-23 AND FCU-25 THROUGH FCU-34.
	DAIKIN MODEL RXYQ120PBTJ			R-410A			2	3.5	10.8	131	2	.35	1.0	8230	-	208	3	43	50	60	620	
	DAIKIN MODEL RXYQ120PBTJ			R-410A			2	3.5	10.8	131	2	.35	1.0	8230	-	208	3	43	50	60	620	
ACCU-2	DAIKIN MODEL RXYQ72PBTJ	ROOF	VRV HEAT PUMP	R-410A	6.0	95	1	4.5	14.2	131	1	.75	1.2	6350	-	208	3	30	35	57	420	SERVES FCU-35 AND FCU-35A.
ACCU-3	DAIKIN MODEL RXYQ72PBTJ	ROOF	VRV HEAT PUMP	R-410A	16.0	95	1	4.5	14.2	-	1	.75	1.2	6350	-	208	3	30	35	57	420	ACCU-3 SYSTEM MODEL RXYQ192PBTJ OR APPROVED EQUAL WITH TWO MODULES, CONNECTED IN SERIES. PROVIDE INDIVIDUAL POWER, DISCONNECT SWITCH AND FUSE FOR EACH MODULE. SERVES FCU-24, FCU-24A, AND FCU-36.
	DAIKIN MODEL RXYQ120PBTJ			R-410A			2	3.5	10.6	131	2	.35	1.0	8230	-	208	3	43	50	60	620	

PROJECT:	
DRAWN:	ATH
CHECKED:	JL
DATE:	09/04/2013
REVISIONS	

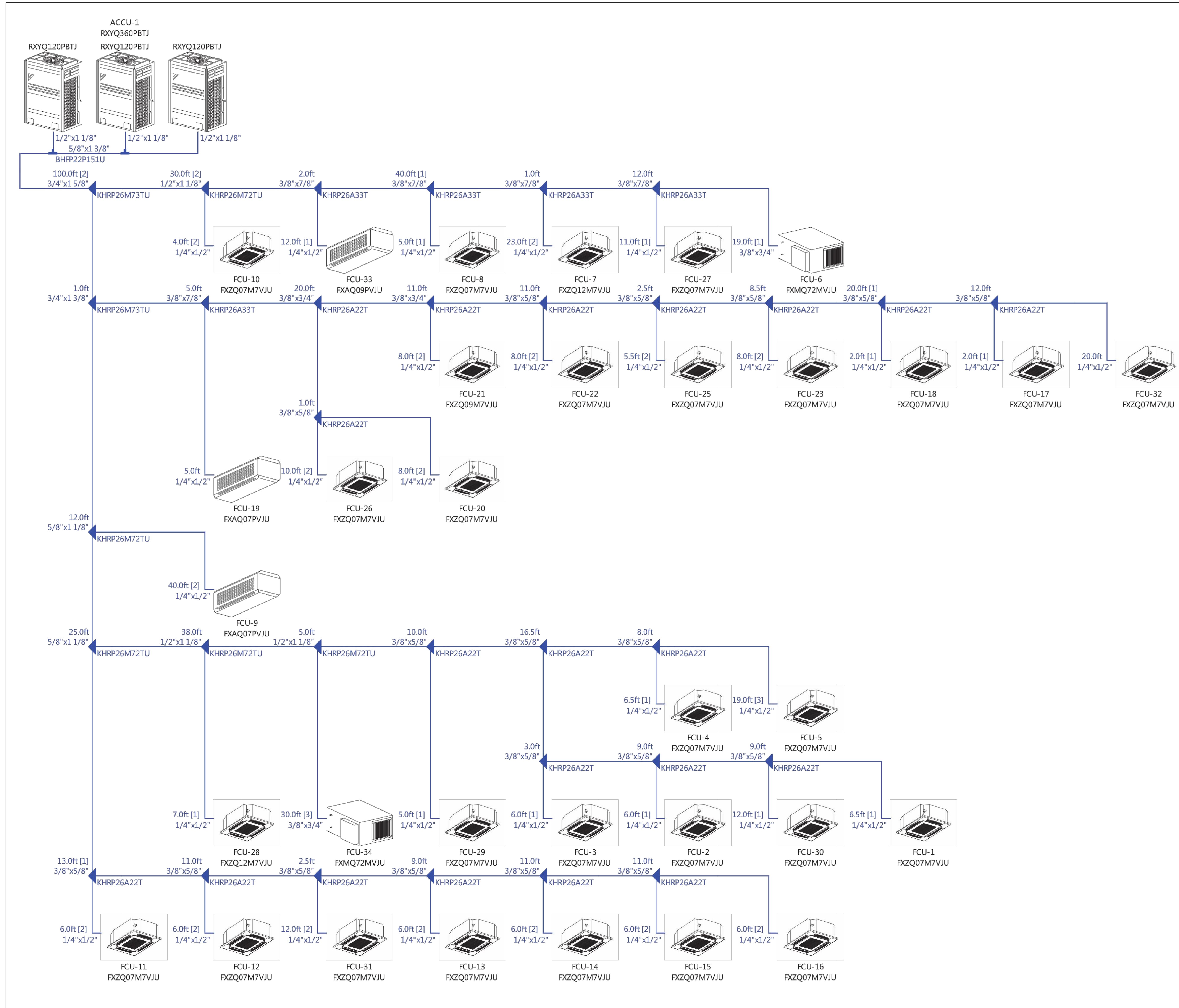
FAN COIL UNIT SCHEDULE

UNIT NO	MANUFACTURER AND MODEL	LOCATION	TYPE	SENSIBLE COOL CAP BTU/HR	LATENT COOL CAP BTU/HR	TOTAL COOL CAP BTU/HR	SUPPLY AIR CFM	ENT AIR TEMP °F		FILTER		E.S.P. INCHES	ELECTRICAL POWER SUPPLY					MAX. SOUND PRESSURE (dBA)	OPER. WT. (LBS)	REMARKS	CORRESPONDING ACCU TAG
								db	wb	TYPE	EFF		VOLTS	Ø	W	MCA	MOP				
FCU-1	DAIKIN MODEL FXZQ07M7VJU	CEILING	2'x2' CASSETTE	4,944	1,303	6,247	320	74.4	62.3	WASHABLE	-	-	208	1	55	.80	15	31	42	SUPPLIED WITH INTEGRAL CONDENSATE PUMP	ACCU-1
FCU-2	DAIKIN MODEL FXZQ07M7VJU	CEILING	2'x2' CASSETTE	5,047	987	6,034	320	74.1	61.5	WASHABLE	-	-	208	1	55	.80	15	31	42	SUPPLIED WITH INTEGRAL CONDENSATE PUMP	
FCU-3	DAIKIN MODEL FXZQ07M7VJU	CEILING	2'x2' CASSETTE	4,900	1,320	6,220	320	74.5	62.2	WASHABLE	-	-	208	1	55	.80	15	31	42	SUPPLIED WITH INTEGRAL CONDENSATE PUMP	
FCU-4	DAIKIN MODEL FXZQ07M7VJU	CEILING	2'x2' CASSETTE	5,111	976	6,087	320	74.6	61.7	WASHABLE	-	-	208	1	55	.80	15	31	42	SUPPLIED WITH INTEGRAL CONDENSATE PUMP	
FCU-5	DAIKIN MODEL FXZQ07M7VJU	CEILING	2'x2' CASSETTE	4,965	1,202	6,167	320	74.2	62.0	WASHABLE	-	-	208	1	55	.80	15	31	42	SUPPLIED WITH INTEGRAL CONDENSATE PUMP	
FCU-6	DAIKIN MODEL FXMQ72MVJU	CEILING	CLG MOUNTED DUCTED UNIT	46,583	11,320	57,903	2048	72.7	61.4	THROWAWAY	MERV 8	.95	208	1	TWO 380	9	15	48	302	SUPPLIED WITH INTEGRAL CONDENSATE PUMP. 290 CFM OA FLOW	
FCU-7	DAIKIN MODEL FXZQ12M7VJU	CEILING	2'x2' CASSETTE	6,057	4,202	10,259	335	71.3	62.9	WASHABLE	-	-	208	1	55	.80	15	33	42	SUPPLIED WITH INTEGRAL CONDENSATE PUMP	
FCU-8	DAIKIN MODEL FXZQ07M7VJU	CEILING	2'x2' CASSETTE	3,685	2,216	5,901	320	67.4	59.9	WASHABLE	-	-	208	1	55	.80	15	31	42	SUPPLIED WITH INTEGRAL CONDENSATE PUMP	
FCU-9	DAIKIN MODEL FXAQ07PVJU	WALL	WALL MOUNTED UNIT	5,548	592	6,140	260	74.2	61.9	WASHABLE	-	-	208	1	40	.40	15	36	26	SUPPLIED WITH INTEGRAL CONDENSATE PUMP	
FCU-10	DAIKIN MODEL FXZQ07M7VJU	CEILING	2'x2' CASSETTE	4,477	1,743	6,220	320	72.1	62.2	WASHABLE	-	-	208	1	55	.80	15	31	42	SUPPLIED WITH INTEGRAL CONDENSATE PUMP	
FCU-11	DAIKIN MODEL FXZQ07M7VJU	CEILING	2'x2' CASSETTE	4,797	1,503	6,300	320	73.9	62.5	WASHABLE	-	-	208	1	55	.80	15	31	42	SUPPLIED WITH INTEGRAL CONDENSATE PUMP	
FCU-12	DAIKIN MODEL FXZQ07M7VJU	CEILING	2'x2' CASSETTE	4,879	1,314	6,193	320	73.9	62.1	WASHABLE	-	-	208	1	55	.80	15	31	42	SUPPLIED WITH INTEGRAL CONDENSATE PUMP	
FCU-13	DAIKIN MODEL FXZQ07M7VJU	CEILING	2'x2' CASSETTE	4,879	1,314	6,193	320	73.9	62.1	WASHABLE	-	-	208	1	55	.80	15	31	42	SUPPLIED WITH INTEGRAL CONDENSATE PUMP	
FCU-14	DAIKIN MODEL FXZQ07M7VJU	CEILING	2'x2' CASSETTE	4,900	1,320	6,220	320	74.1	62.2	WASHABLE	-	-	208	1	55	.80	15	31	42	SUPPLIED WITH INTEGRAL CONDENSATE PUMP	
FCU-15	DAIKIN MODEL FXZQ07M7VJU	CEILING	2'x2' CASSETTE	4,900	1,320	6,220	320	74.1	62.2	WASHABLE	-	-	208	1	55	.80	15	31	42	SUPPLIED WITH INTEGRAL CONDENSATE PUMP	
FCU-16	DAIKIN MODEL FXZQ07M7VJU	CEILING	2'x2' CASSETTE	4,903	1,343	6,246	320	74.2	62.3	WASHABLE	-	-	208	1	55	.80	15	31	42	SUPPLIED WITH INTEGRAL CONDENSATE PUMP	
FCU-17	DAIKIN MODEL FXZQ07M7VJU	CEILING	2'x2' CASSETTE	4,733	1,514	6,247	320	73.4	62.3	WASHABLE	-	-	208	1	55	.80	15	31	42	SUPPLIED WITH INTEGRAL CONDENSATE PUMP	
FCU-18	DAIKIN MODEL FXZQ07M7VJU	CEILING	2'x2' CASSETTE	4,770	1,397	6,167	320	73.3	62.0	WASHABLE	-	-	208	1	55	.80	15	31	42	SUPPLIED WITH INTEGRAL CONDENSATE PUMP	
FCU-19	DAIKIN MODEL FXAQ07PVJU	WALL	WALL MOUNTED UNIT	5,859	95	5,954	260	74.6	61.2	WASHABLE	-	-	208	1	40	.40	15	36	26	SUPPLIED WITH INTEGRAL CONDENSATE PUMP	
FCU-20	DAIKIN MODEL FXZQ07M7VJU	CEILING	2'x2' CASSETTE	4,709	1,511	6,220	320	73.2	62.2	WASHABLE	-	-	208	1	55	.80	15	31	42	SUPPLIED WITH INTEGRAL CONDENSATE PUMP	
FCU-21	DAIKIN MODEL FXZQ09M7VJU	CEILING	2'x2' CASSETTE	5,640	2,293	7,933	320	73.2	62.3	WASHABLE	-	-	208	1	55	.80	15	33	42	SUPPLIED WITH INTEGRAL CONDENSATE PUMP	
FCU-22	DAIKIN MODEL FXZQ07M7VJU	CEILING	2'x2' CASSETTE	4,688	1,559	6,247	320	73.2	62.3	WASHABLE	-	-	208	1	55	.80	15	31	42	SUPPLIED WITH INTEGRAL CONDENSATE PUMP	
FCU-23	DAIKIN MODEL FXZQ07M7VJU	CEILING	2'x2' CASSETTE	4,838	1,409	6,247	320	73.9	62.3	WASHABLE	-	-	208	1	55	.80	15	31	42	SUPPLIED WITH INTEGRAL CONDENSATE PUMP	
FCU-25	DAIKIN MODEL FXZQ07M7VJU	CEILING	2'x2' CASSETTE	4,497	1,404	5,901	320	71.1	60.7	WASHABLE	-	-	208	1	55	.80	15	31	42	SUPPLIED WITH INTEGRAL CONDENSATE PUMP	
FCU-26	DAIKIN MODEL FXZQ07M7VJU	CEILING	2'x2' CASSETTE	4,961	1,152	6,113	320	74.0	61.8	WASHABLE	-	-	208	1	55	.80	15	31	42	SUPPLIED WITH INTEGRAL CONDENSATE PUMP	
FCU-27	DAIKIN MODEL FXZQ07M7VJU	CEILING	2'x2' CASSETTE	4,896	1,191	6,087	320	73.6	61.7	WASHABLE	-	-	208	1	55	.80	15	31	42	SUPPLIED WITH INTEGRAL CONDENSATE PUMP	
FCU-28	DAIKIN MODEL FXZQ12M7VJU	CEILING	2'x2' CASSETTE	6,855	3,085	9,940	335	74.3	62.1	WASHABLE	-	-	208	1	55	.80	15	33	42	SUPPLIED WITH INTEGRAL CONDENSATE PUMP	
FCU-29	DAIKIN MODEL FXZQ07M7VJU	CEILING	2'x2' CASSETTE	4,845	1,056	5,901	320	72.7	61.0	WASHABLE	-	-	208	1	55	.80	15	31	42	SUPPLIED WITH INTEGRAL CONDENSATE PUMP	
FCU-30	DAIKIN MODEL FXZQ07M7VJU	CEILING	2'x2' CASSETTE	4,913	1,067	5,980	320	73.3	61.3	WASHABLE	-	-	208	1	55	.80	15	31	42	SUPPLIED WITH INTEGRAL CONDENSATE PUMP	
FCU-31	DAIKIN MODEL FXZQ07M7VJU	CEILING	2'x2' CASSETTE	4,961	1152	6,113	320	74.0	61.8	WASHABLE	-	-	208	1	55	.80	15	31	42	SUPPLIED WITH INTEGRAL CONDENSATE PUMP	
FCU-32	DAIKIN MODEL FXZQ07M7VJU	CEILING	2'x2' CASSETTE	4,497	404	4,901	320	70.8	60.6	WASHABLE	-	-	208	1	55	.80	15	31	42	SUPPLIED WITH INTEGRAL CONDENSATE PUMP	
FCU-33	DAIKIN MODEL FXAQ09PVJU	WALL	WALL MOUNTED UNIT	6,848	786	7,634	280	75.0	61.4	WASHABLE	-	-	208	1	40	.40	15	37	26	SUPPLIED WITH INTEGRAL CONDENSATE PUMP	
FCU-34	DAIKIN MODEL FXMQ72MVJU	CEILING	CLG MOUNTED DUCTED UNIT	49,798	9,353	59,151	2048	73.9	61.9	THROWAWAY	MERV 8	.95	208	1	380	9.5	15	49	302	SUPPLIED WITH INTEGRAL CONDENSATE PUMP. 125 CFM OA FLOW	
FCU-35	DAIKIN MODEL FXMQ96MVJU	CEILING	CLG MOUNTED DUCTED UNIT	61,616	17,215	78,831	2543	73.9	61.9	THROWAWAY	MERV 8	.95	208	1	380	10.7	15	48	302	SUPPLIED WITH INTEGRAL CONDENSATE PUMP. 375 CFM OA FLOW	
FCU-24	DAIKIN MODEL FXMQ72MFVJU	CEILING	CLG MOUNTED DUCTED UNIT	N/A	N/A	72,000	985	73.9	61.9	THROWAWAY	MERV 8	.96	208	1	380	3.6	15	47	271	SUPPLIED WITH INTEGRAL CONDENSATE PUMP, 100% OA UNIT.	ACCU-3
FCU-24A	DAIKIN MODEL FXMQ72MFVJU	CEILING	CLG MOUNTED DUCTED UNIT	N/A	N/A	72,000	985	73.9	61.9	THROWAWAY	MERV 8	.96	208	1	380	3.6	15	47	271	SUPPLIED WITH INTEGRAL CONDENSATE PUMP, 100% OA UNIT	
FCU-36	DAIKIN MODEL FXMQ48MFVJU	CEILING	CLG MOUNTED DUCTED UNIT	N/A	N/A	48,000	635	73.9	61.9	THROWAWAY	MERV 8	.88	208	1	380	2.1	15	42	190	SUPPLIED WITH INTEGRAL CONDENSATE PUMP, 100% OA UNIT	

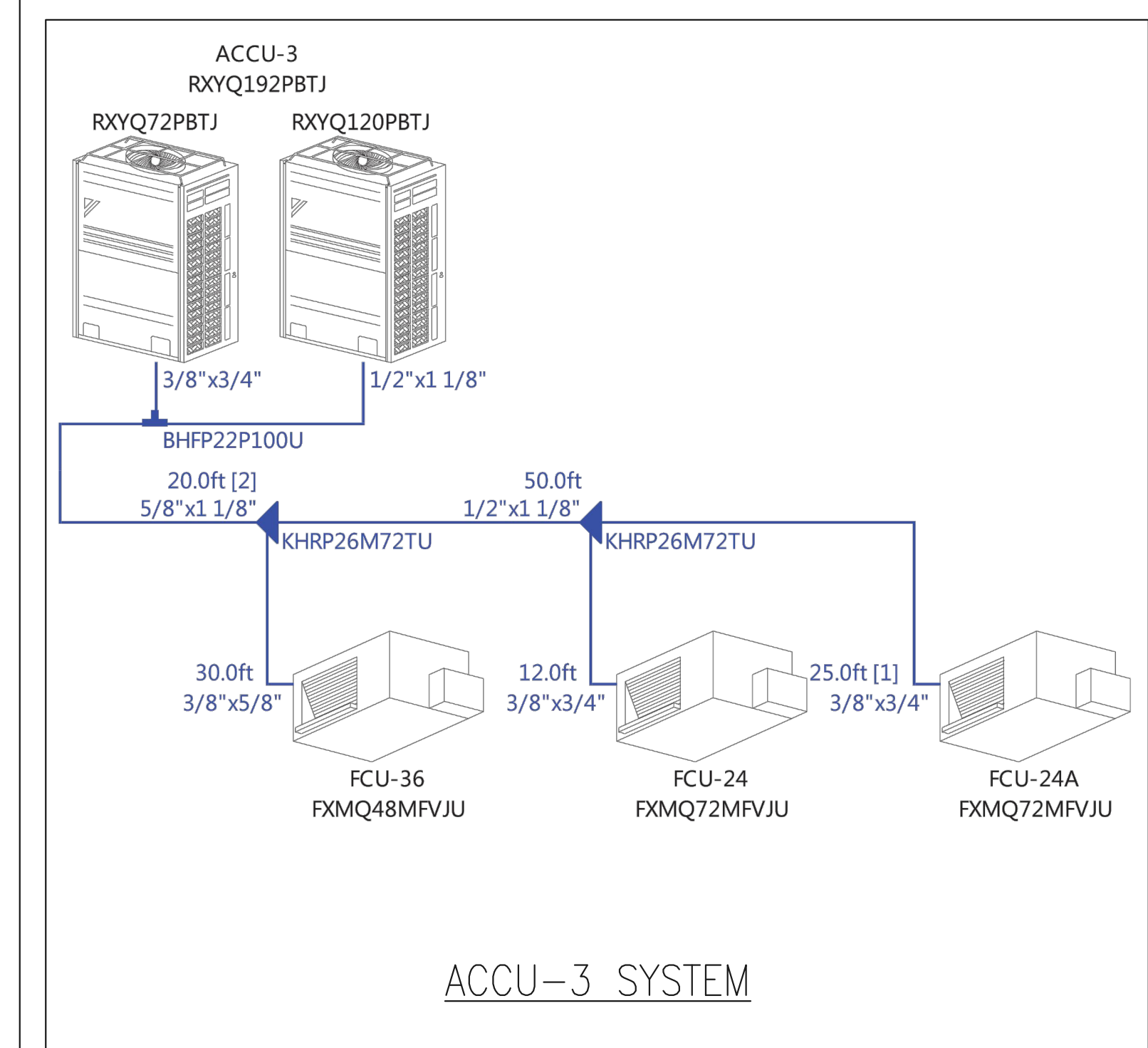
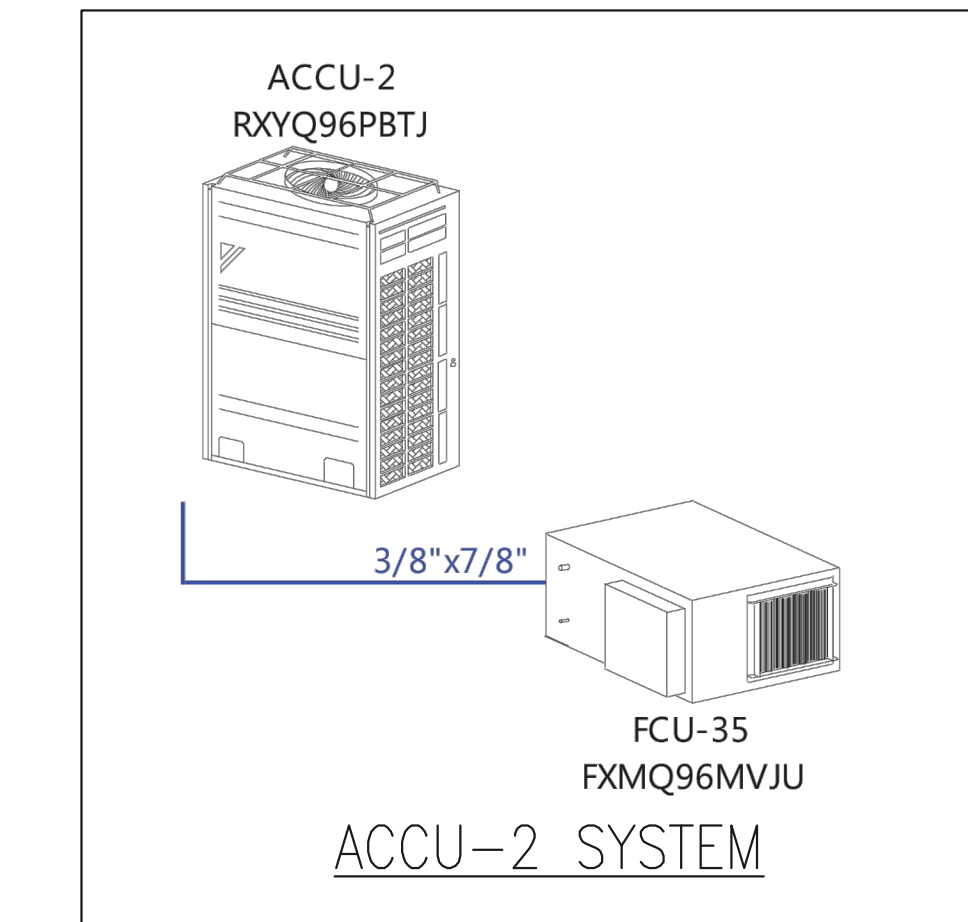
BIG ISLAND AIR CONDITIONING
 FORMALLY EMC AND CUSTOM AIRE
 73-8620 KAHALOHA ST UNIT#6
 KAILUA KONA HAWAII 96740
 808-329-7672 FAX: (808) 329-6462

ARFF FACILITY IMPROVEMENTS
 AT KONA INTERNATIONAL AIRPORT AT KEAHOLE

PROJECT:
 DRAWN: ATH
 CHECKED: JL
 DATE: 12/09/2013
 REVISIONS



ACCU-1 SYSTEM



NOTE:
SEE PLAN 1/M4-02 FOR LOCATION OF INTELLIGENT TOUCH CONTROLLER FOR THE VRF AC SYSTEM.

1 REFRIGERANT PIPING SCHEMATICS
M6.03 NOT TO SCALE

PROJECT:	
DRAWN:	ATH
CHECKED:	JL
DATE:	12/09/2013
REVISIONS	